



EMBASSY
verde



Artistic impression of Embassy Verde

A tropical landscape featuring a row of palm trees in the foreground, with a clear blue sky above. Two flocks of birds are visible in flight, one in the upper right and another in the lower left. The text "HOMES IN NATURE, JUST FOR YOU" is centered in the sky area. On the right side, there are stylized white line drawings of leaves.

HOMES IN NATURE, JUST FOR YOU





YOUR GATEWAY TO GROWTH

North Bengaluru is a prime location for homeowners seeking both convenience and connectivity. With close proximity to Kempegowda International Airport, residents enjoy effortless travel. The area is also home to key business and retail hubs, ensuring a thriving professional and personal life. Rapid infrastructure growth, excellent connectivity, and abundant green spaces make it a highly desirable destination for investment. As the region continues to develop, it offers long-term value, making it an ideal choice for those seeking modern living in a dynamic and well-connected environment.



EMBASSY
SPRINGS





COME HOME TO EMBASSY SPRINGS

Masterplan of Happiness

Amid the wearisome monotony and stresses of urban life, we find ourselves seeking moments of elusive happiness. While we often search far and wide, true joy begins at home. This belief is the inspiration behind Embassy Springs—the 'Masterplan for Happiness.' Life here is designed to bring together experiences that foster a sense of belonging, community, and harmony with nature. From spacious contemporary apartments to customizable plots for every dream, there's a place for everyone to craft their own vision of happiness.



EMBASSY
verde



Artistic impression of Embassy Verde

A LIFESTYLE JUST FOR YOU

Embassy Verde invites you to embrace a life where vibrant greenery meets modern living. Nestled within Embassy Springs, North Bengaluru's sustainable township, this thoughtfully designed community stays true to its name, Verde - meaning green - by surrounding you with serene natural beauty.

Picture yourself waking up to peaceful vistas of lush landscapes, refreshing your senses, and setting a positive tone for the day. Carefully curated amenities, including yoga and meditation spaces, a state-of-the-art fitness center, and a welcoming swimming pool, are crafted to nurture your well-being.

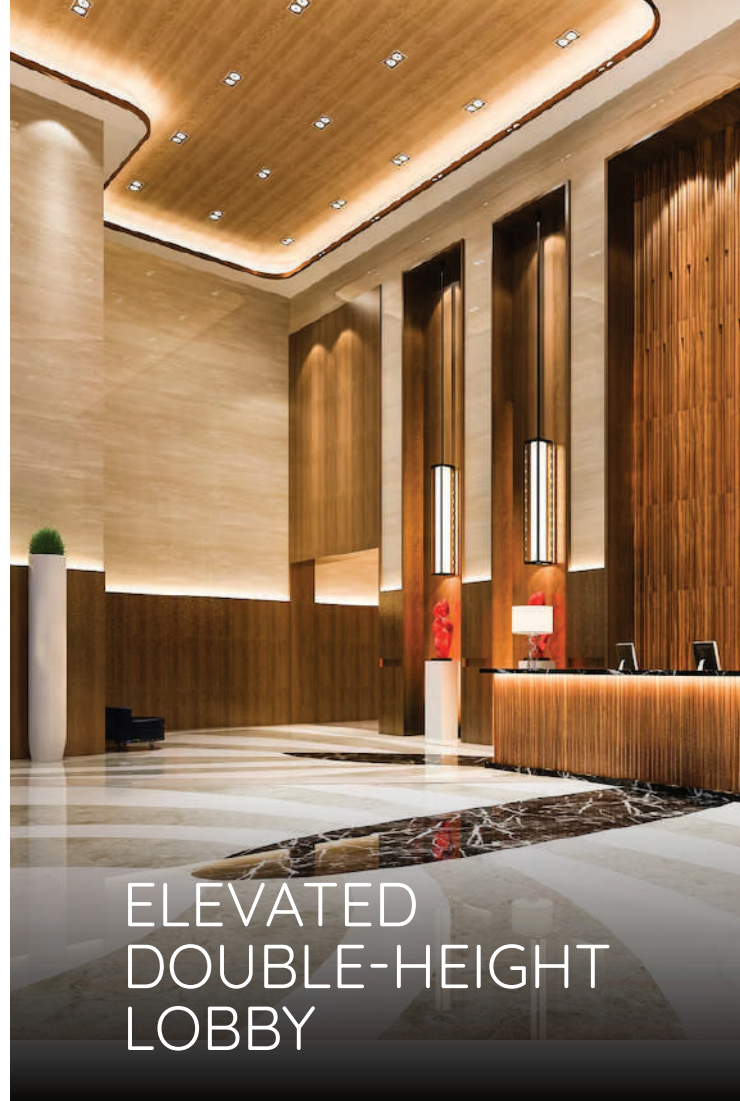
Step into a world of beautifully landscaped parks and open spaces, ideal for rejuvenating walks or meaningful gatherings with loved ones. Beyond the greenery, enjoy the unmatched convenience of proximity to the international airport and key city hubs, ensuring your lifestyle remains effortlessly connected.

At Embassy Verde, every moment celebrates the beauty of green living and the harmony it brings to life.



SMART DESIGNED HOMES

Embassy Verde's residential units combine compact dimensions with a spacious feel. Cleverly optimized layouts maximize living and dining areas, ensuring residents enjoy ample space for relaxation, entertaining, and family time—all in a smart, efficient design.



ELEVATED DOUBLE-HEIGHT LOBBY

The double-height lobby at Embassy Verde offers a grand, spacious entrance that creates an inviting atmosphere for residents and visitors. This design feature adds a sense of openness and sophistication, enhancing the architectural elegance of the project.



BRIGHT, AIRY LIVING SPACES

Every unit at Embassy Verde is crafted to welcome abundant natural light and fresh air. Carefully placed windows, balconies, and open spaces optimize the flow of light and ventilation, creating a vibrant, airy environment that enhances daily living.



MAXIMUM UTILITY UNITS

Embassy Verde's units prioritize efficient design, ensuring that every square foot serves a purpose. With carefully planned layouts that eliminate wasted areas, residents can enjoy a home that feels both practical and spacious, tailored to their everyday needs.



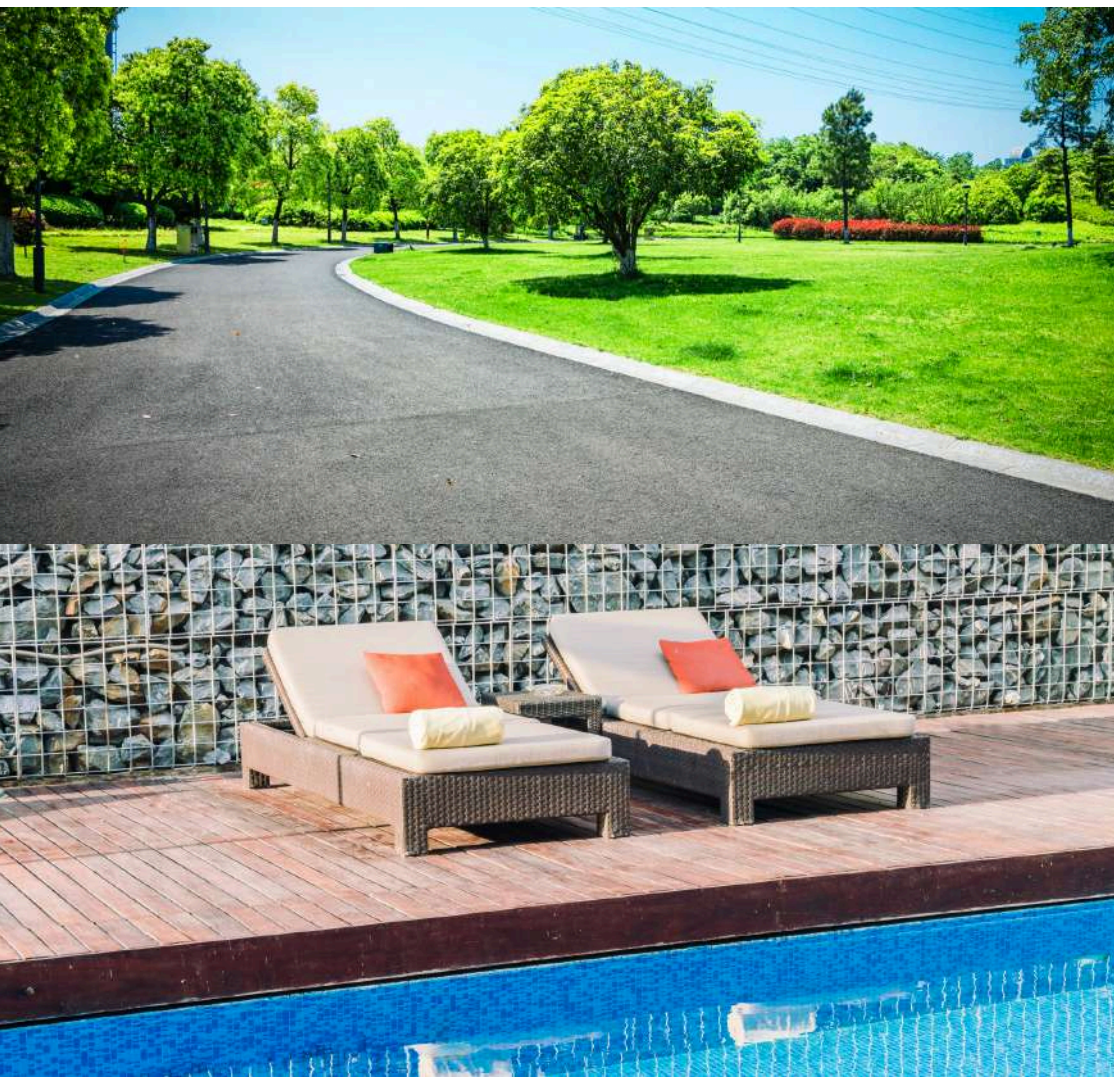
UNOBSTRUCTED CLEAR VIEWS

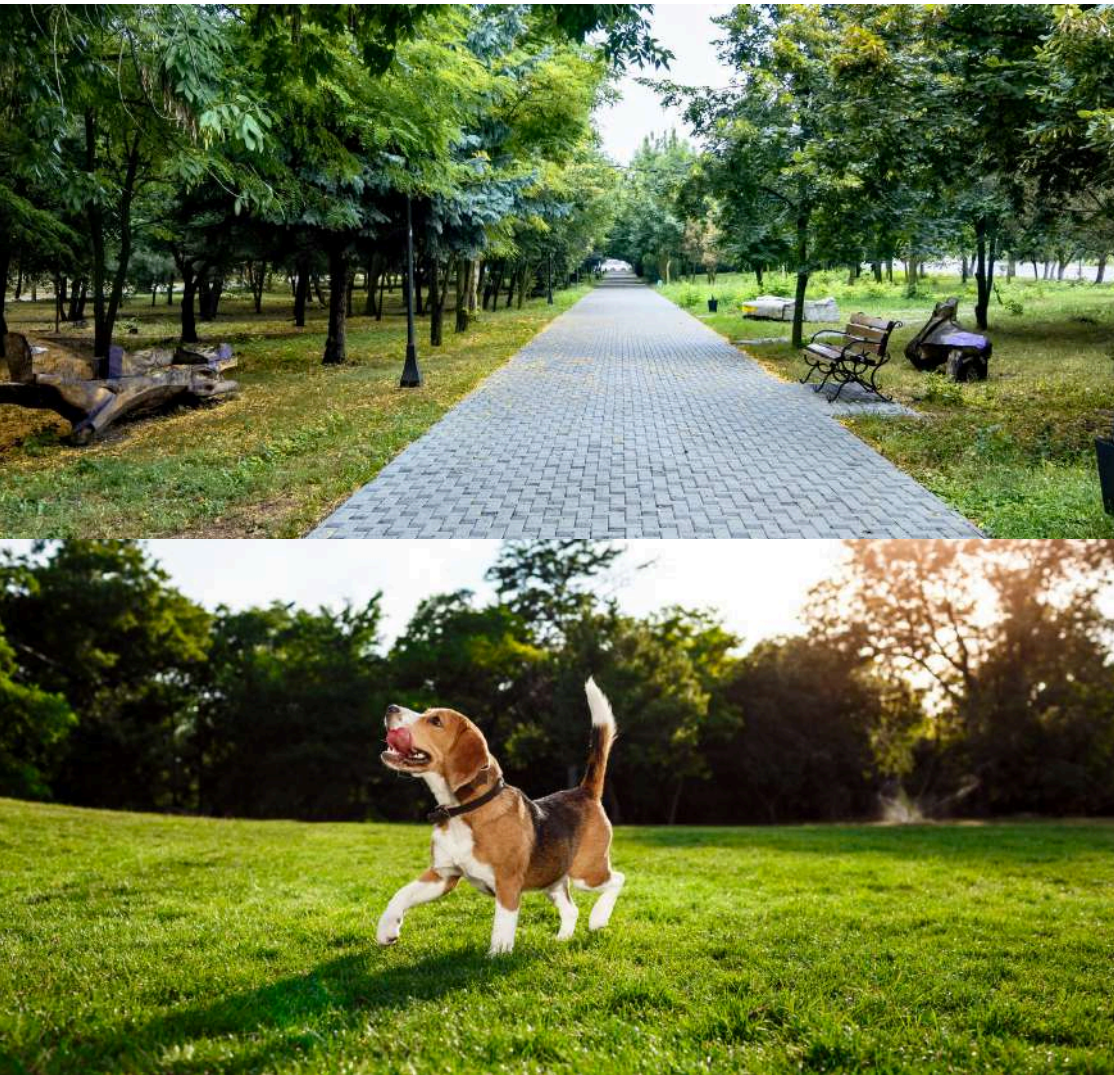
Each home at Embassy Verde offers clear, uninterrupted views of world-class amenities and lush garden spaces. Thoughtfully designed layouts ensure that residents enjoy scenic vistas, connecting them to nature and creating a serene, open atmosphere.



VEHICLE FREE ZONES

Embassy Verde's traffic-free podium creates a serene, pedestrian-only zone. Vehicles are restricted to designated parking, allowing residents to enjoy peaceful walking paths, beautifully landscaped gardens, and recreational areas, all without the disruption of traffic.





AMENITIES

ARRIVAL PLAZA

SWIMMING POOL WITH POOL DECK

CLUBHOUSE

LANDSCAPED LAWNS WITH SEATING

SPORTS COURTS

COMMUNITY SEATING

DRIVEWAYS

WALKWAYS

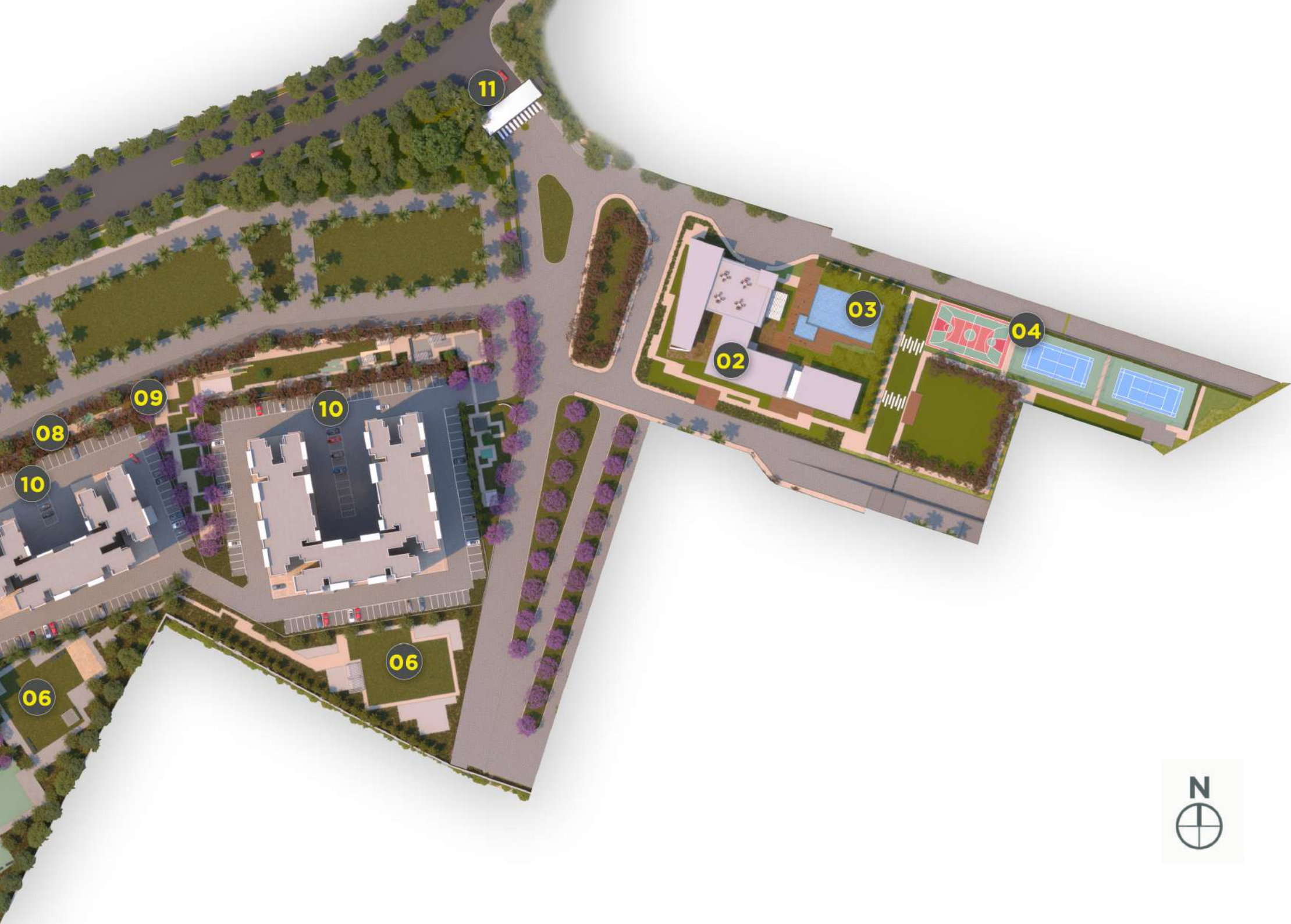
PET PARK

MASTERPLAN

LEGEND

- 01. SITE ENTRY
- 02. CLUB HOUSE
- 03. SWIMMING POOL
- 04. PLAY COURTS
- 05. PET PARK
- 06. PARK
- 07. MULTIPURPOSE COURT
- 08. SEATING DECKS
- 09. PEDESTRIAN PATHWAY
- 10. DROP OFF ZONE
- 11. SITE EXIT





11

03

04

02

10

09

08

10

06

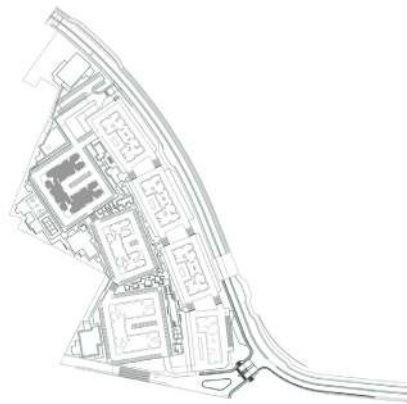
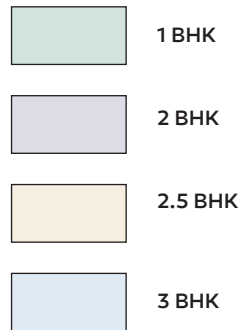
06



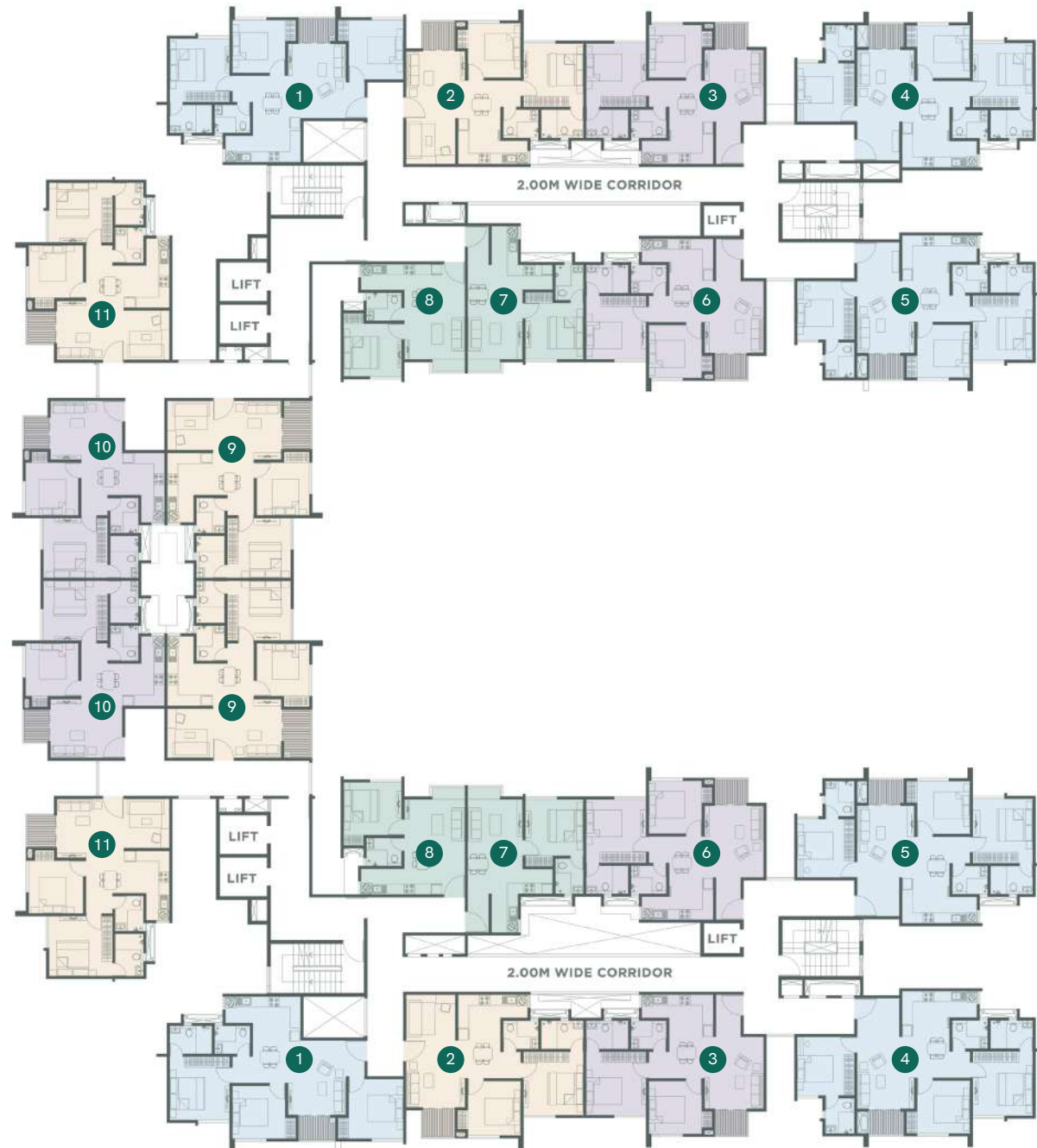
The background is a solid teal color with a repeating pattern of stylized, overlapping leaves. The leaves are outlined in a slightly lighter shade of teal, creating a subtle, textured effect.

CLUSTER PLANS

MARIGOLD TYPICAL FLOORS



KEY PLAN

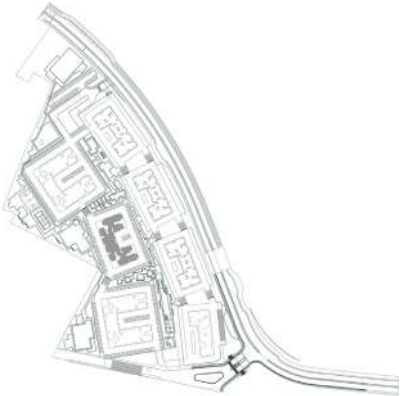




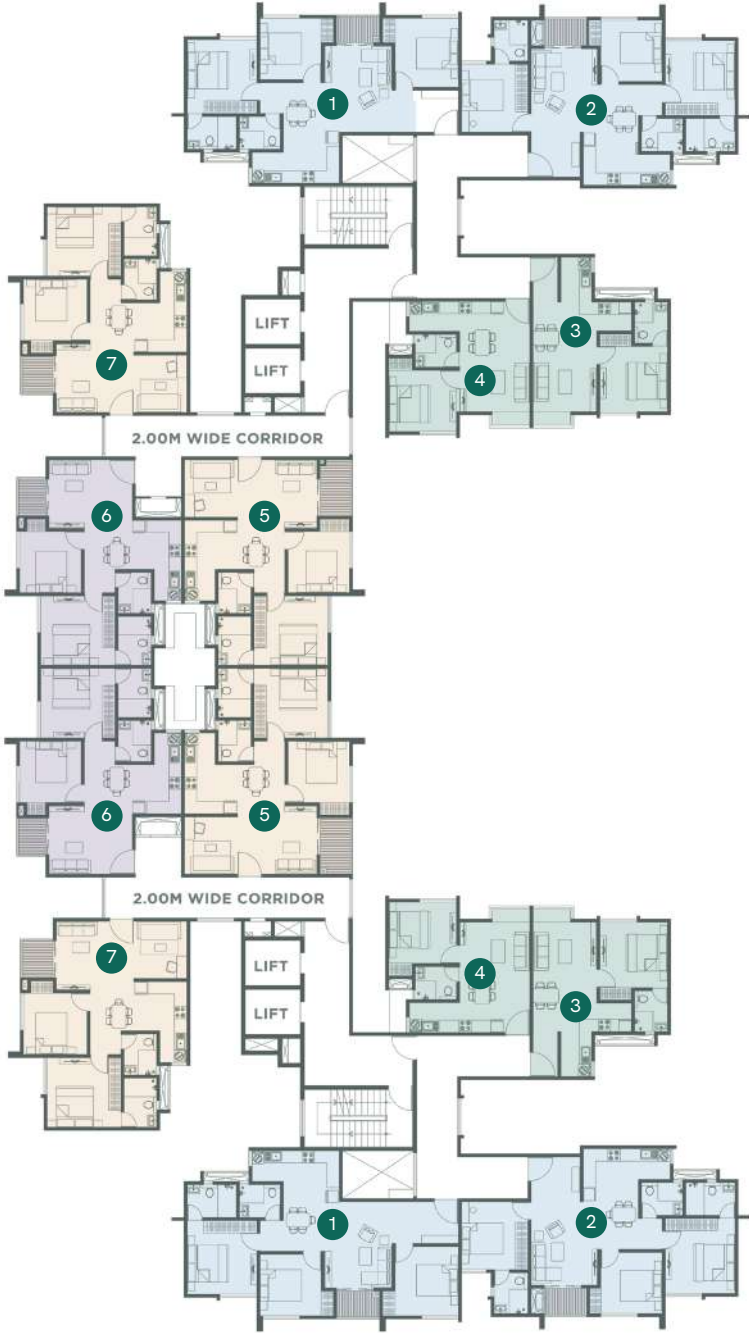
Artistic impression of Embassy Verde

LAVENDER
TYPICAL FLOORS

- 1 BHK
- 2 BHK
- 2.5 BHK
- 3 BHK



KEY PLAN

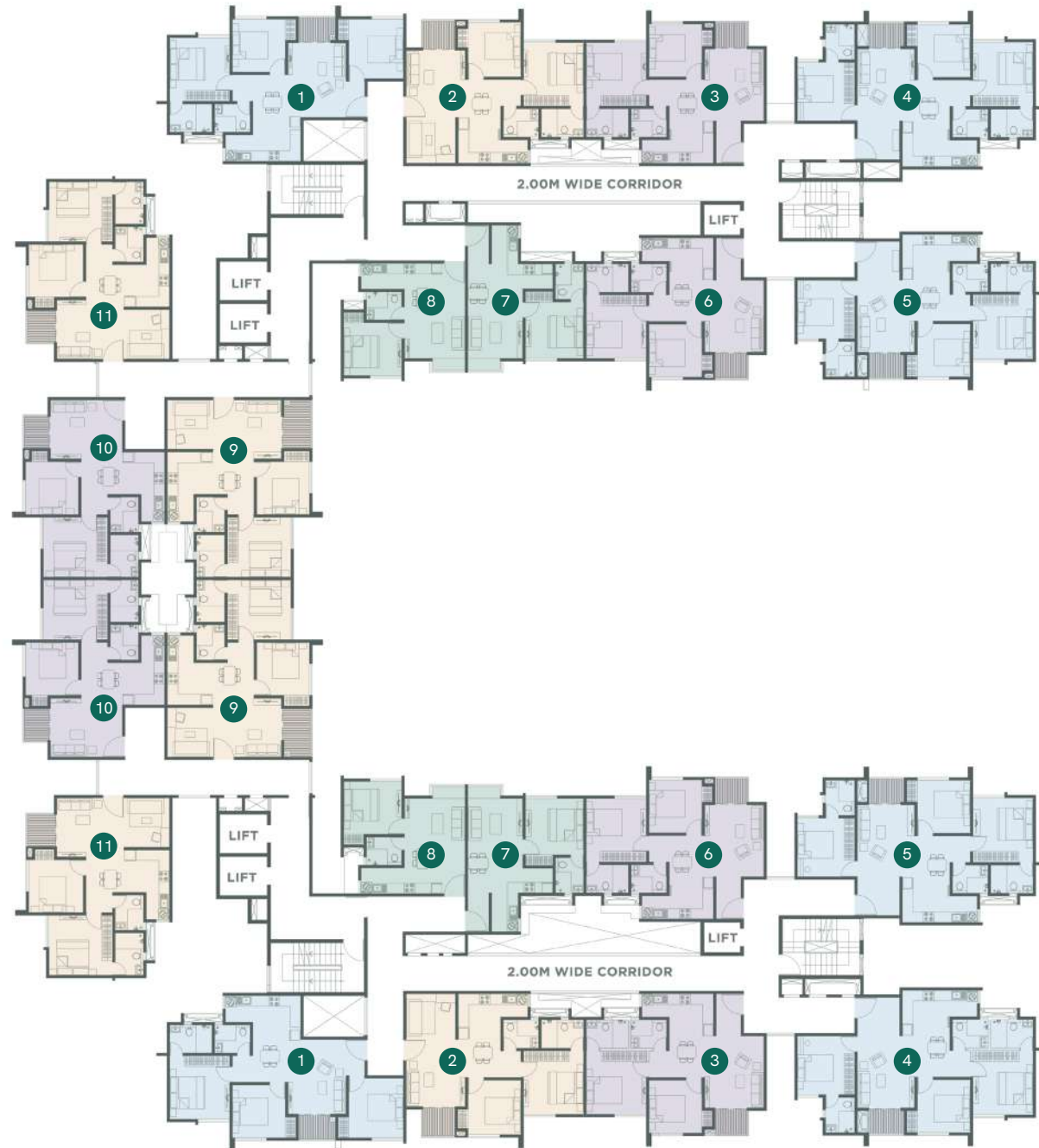




KALMIA TYPICAL FLOORS



KEY PLAN



The background is a solid teal color with a repeating pattern of stylized, overlapping leaves. The leaves are outlined in a slightly lighter shade of teal, creating a subtle, textured effect.

UNIT PLANS



Artistic impression of Embassy Verde

1BHK UNIT PLANS

MARIGOLD & KALMIA

1 BEDROOM - 1T

SUPER BUILT-UP AREA - 628 SQ.FT

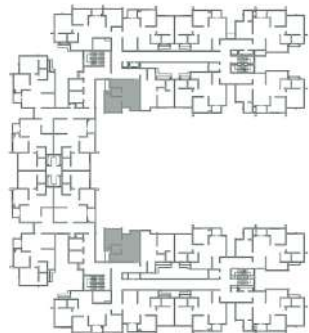
CARPET AREA - 417 SQ.FT

KALMIA - BLOCK A - NORTH FACING

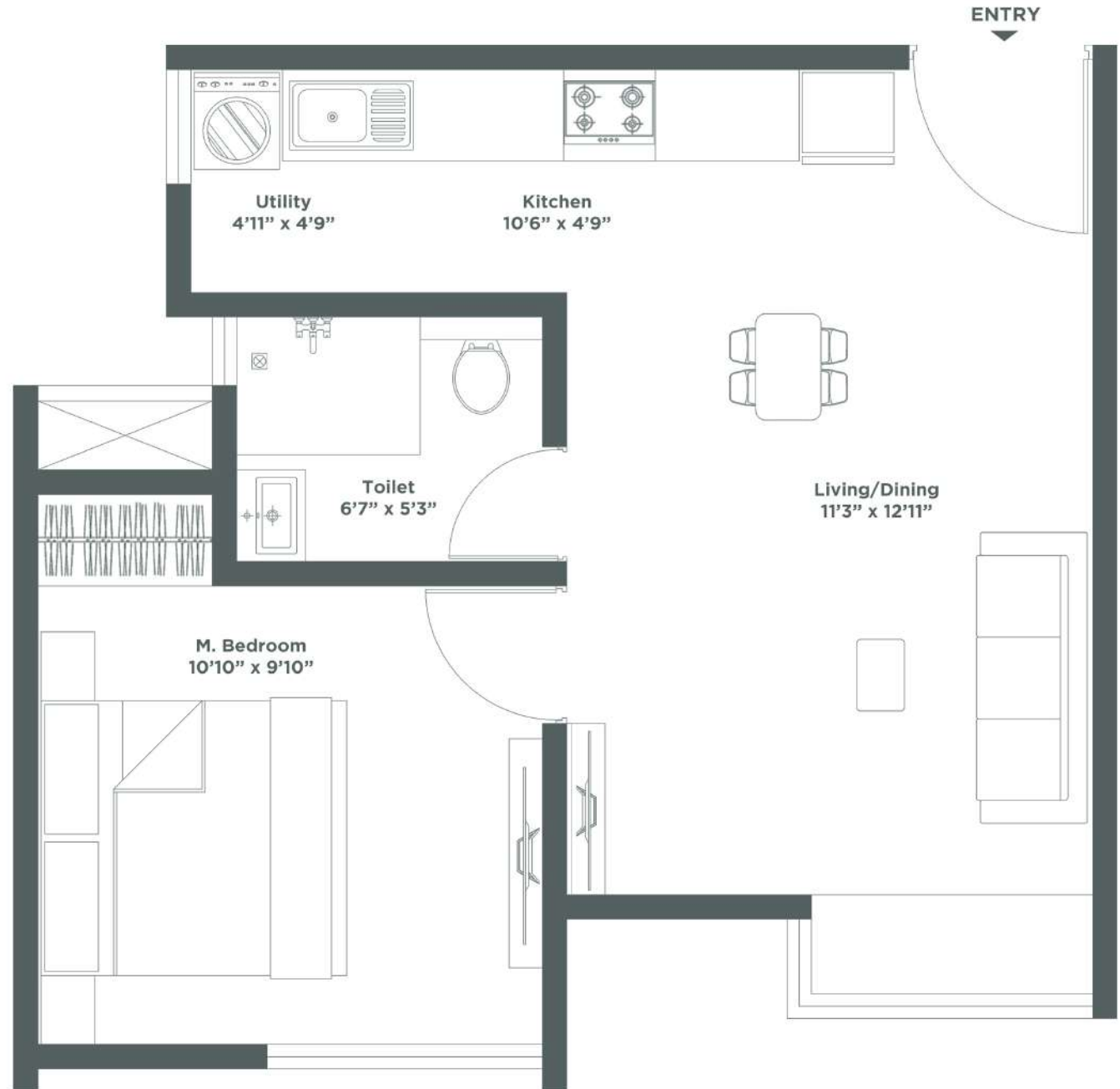
KALMIA - BLOCK B - SOUTH FACING

MARIGOLD - BLOCK A - NORTH FACING

MARIGOLD - BLOCK B - SOUTH FACING



KEY PLAN



LAVENDER

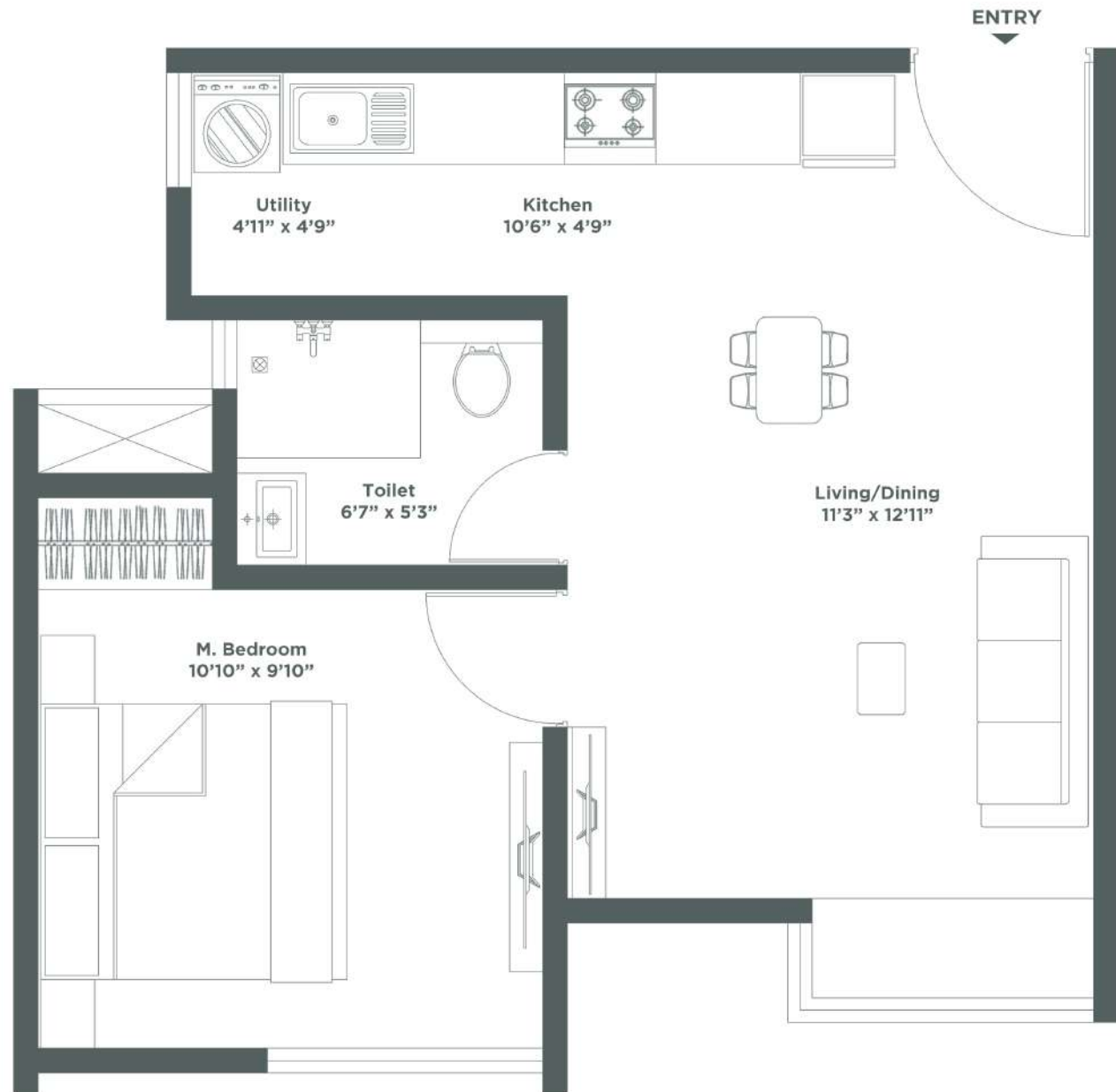
1 BEDROOM - 1T

SUPER BUILT-UP AREA - 628 SQ.FT

CARPET AREA - 417 SQ.FT

LAVENDER - BLOCK A - NORTH FACING

LAVENDER - BLOCK B - SOUTH FACING



KEY PLAN

MARIGOLD & KALMIA

1 BEDROOM - 1T

SUPER BUILT-UP AREA - 688 SQ.FT

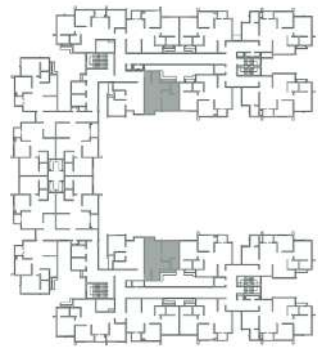
CARPET AREA - 463 SQ.FT

KALMIA - BLOCK A - WEST FACING

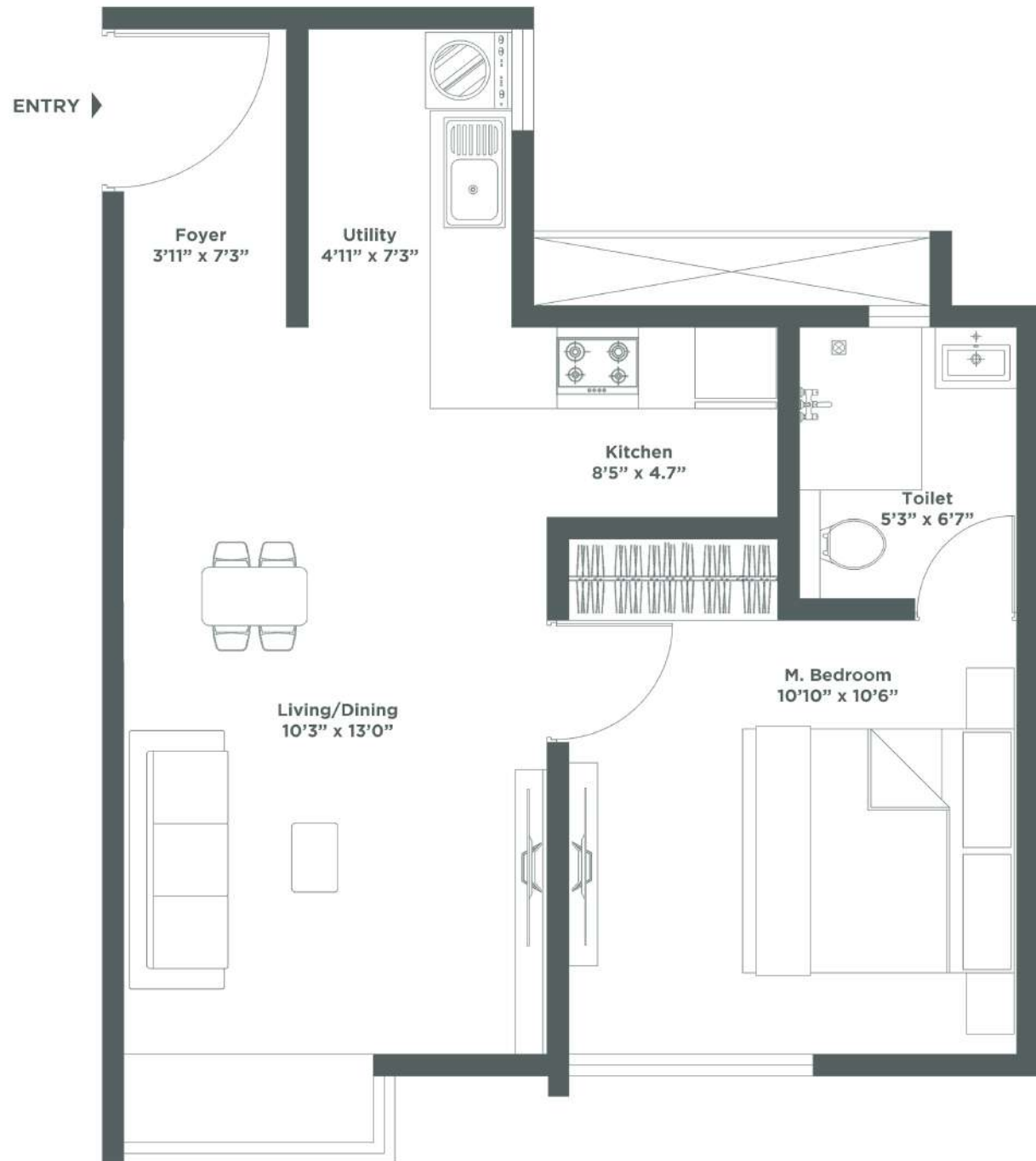
KALMIA - BLOCK B - WEST FACING

MARIGOLD - BLOCK A - WEST FACING

MARIGOLD - BLOCK B - WEST FACING



KEY PLAN



LAVENDER

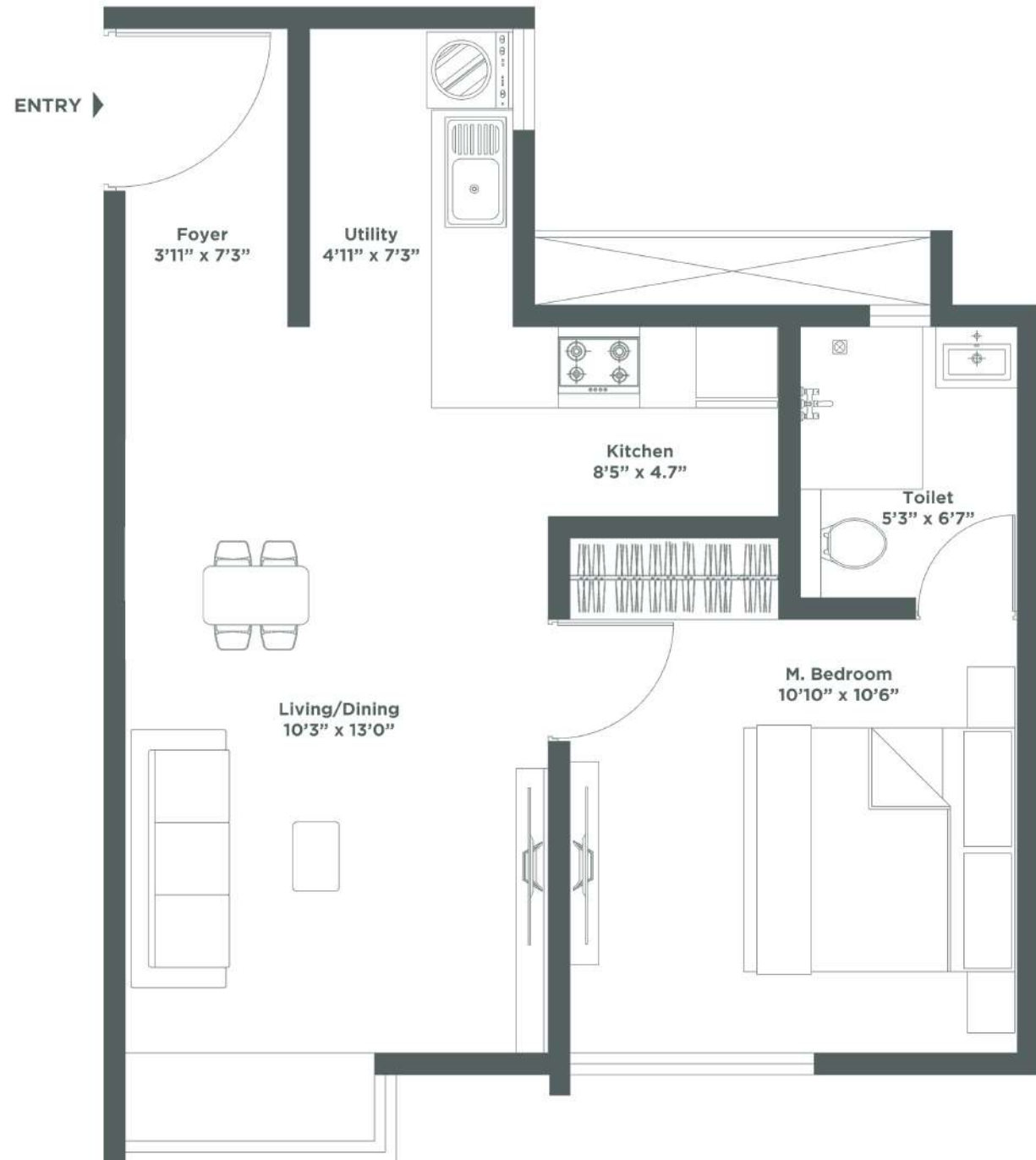
1 BEDROOM - 1T

SUPER BUILT-UP AREA - 688 SQ.FT

CARPET AREA - 463 SQ.FT

LAVENDER - BLOCK A - WEST FACING

LAVENDER - BLOCK B - WEST FACING





Artistic impression of Embassy Verde

2BHK UNIT PLANS

MARIGOLD & KALMIA

2 BEDROOM - 2T

SUPER BUILT-UP AREA - 971 SQ.FT

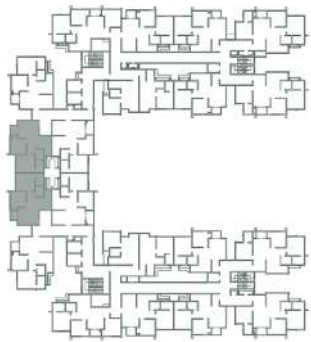
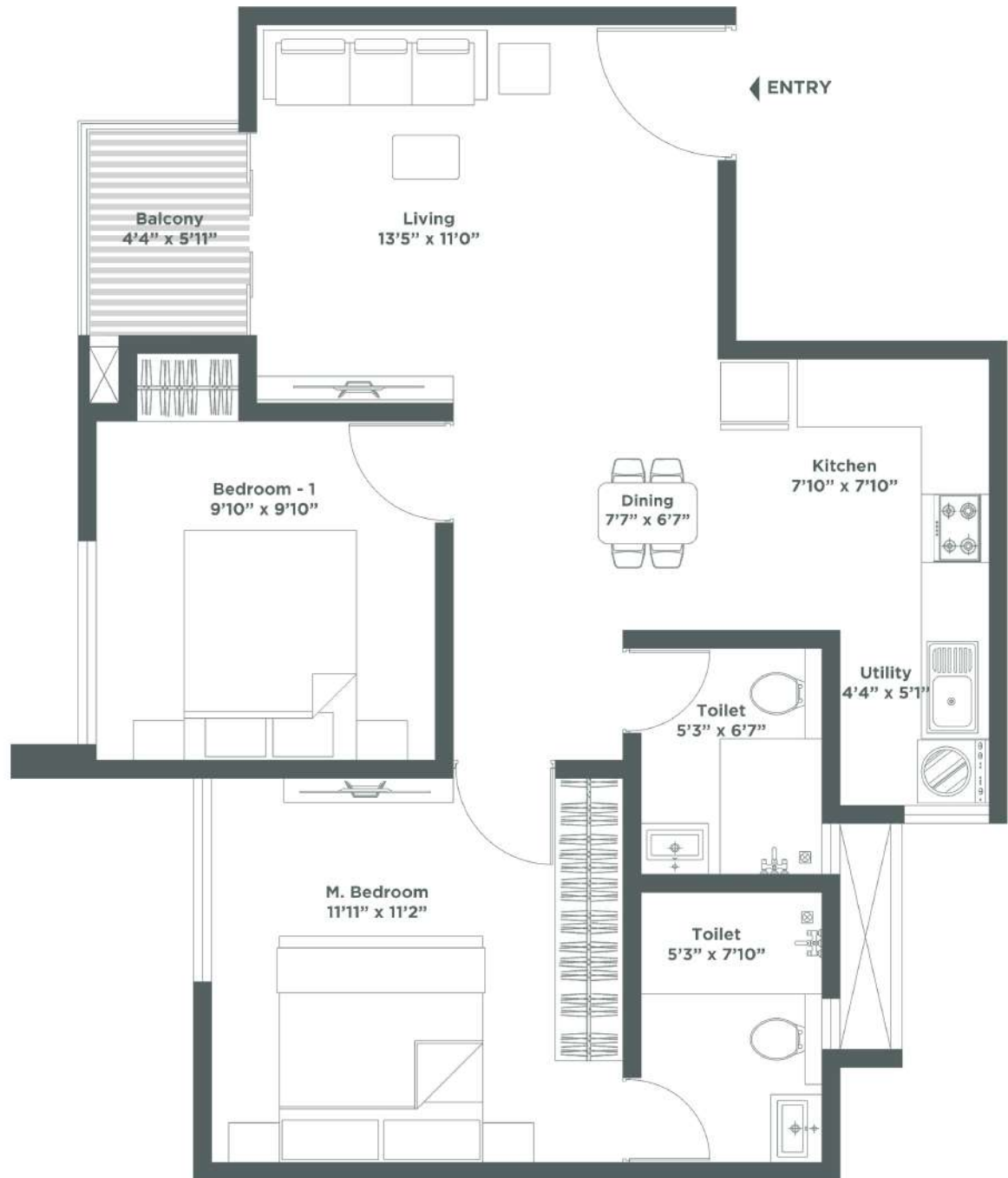
CARPET AREA - 672 SQ.FT

KALMIA - BLOCK A - EAST FACING

KALMIA - BLOCK B - EAST FACING

MARIGOLD - BLOCK A - EAST FACING

MARIGOLD - BLOCK B - EAST FACING



KEY PLAN

LAVENDER

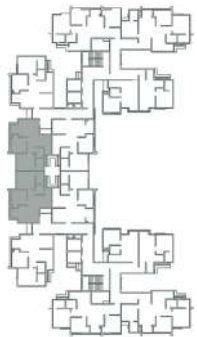
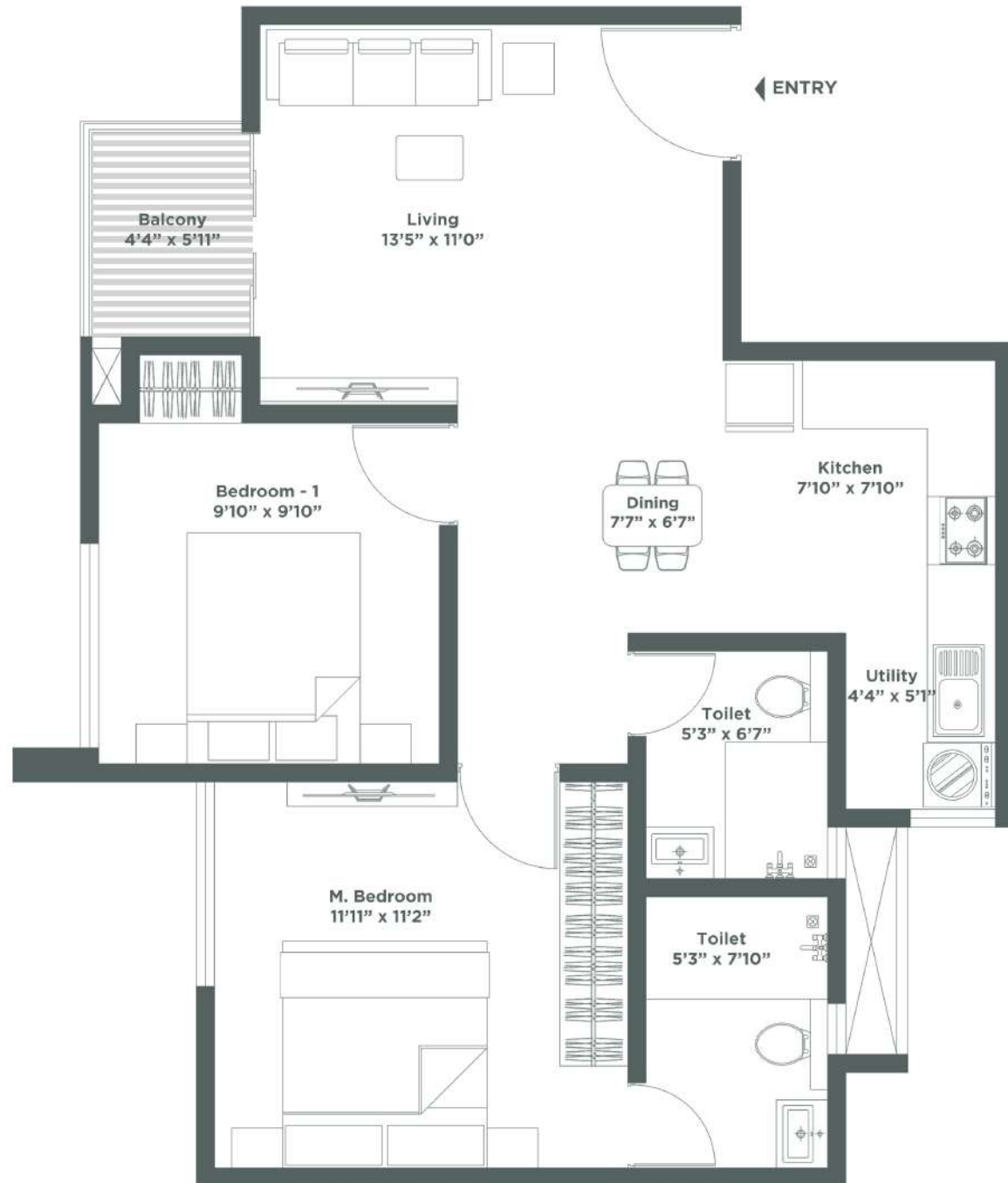
2 BEDROOM - 2T

SUPER BUILT-UP AREA - 971 SQ.FT

CARPET AREA - 672 SQ.FT

LAVENDER - BLOCK A - EAST FACING

LAVENDER - BLOCK B - EAST FACING



KEY PLAN

MARIGOLD & KALMIA

2 BEDROOM - 2T

SUPER BUILT-UP AREA - 1032 SQ.FT

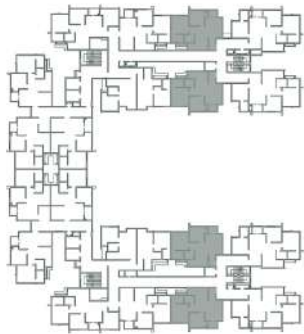
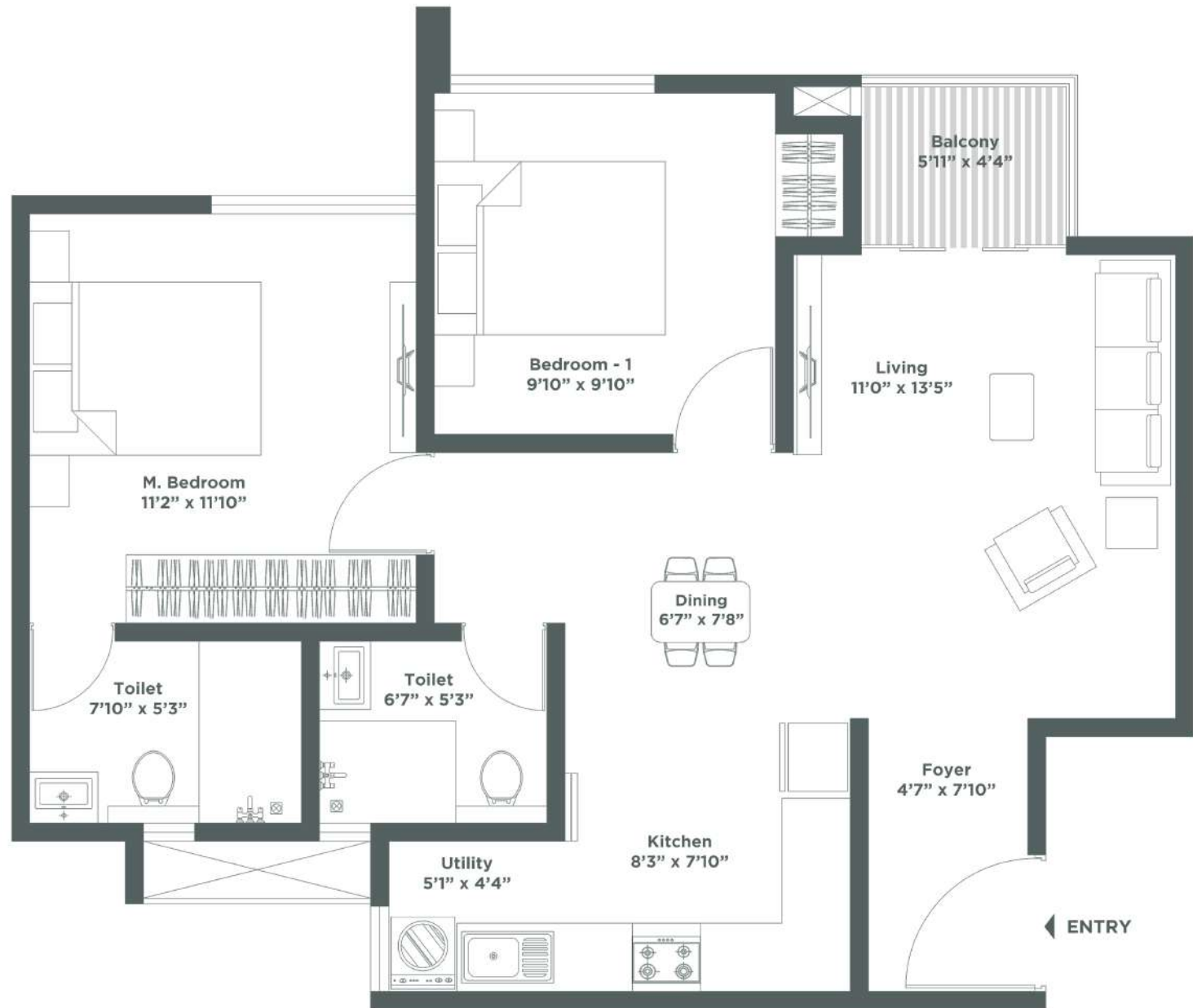
CARPET AREA - 714 SQ.FT

KALMIA - BLOCK A - EAST FACING

KALMIA - BLOCK B - EAST FACING

MARIGOLD - BLOCK A - EAST FACING

MARIGOLD - BLOCK B - EAST FACING



KEY PLAN



Artistic impression of Embassy Verde

2.5BHK UNIT PLANS

MARIGOLD & KALMIA

2.5 BEDROOM - 2T S

SUPER BUILT-UP AREA - 1082 SQ.FT

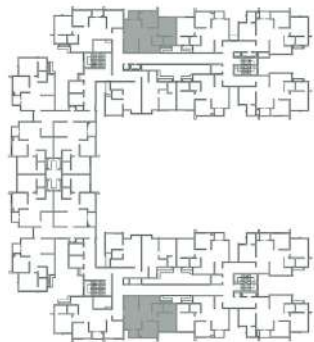
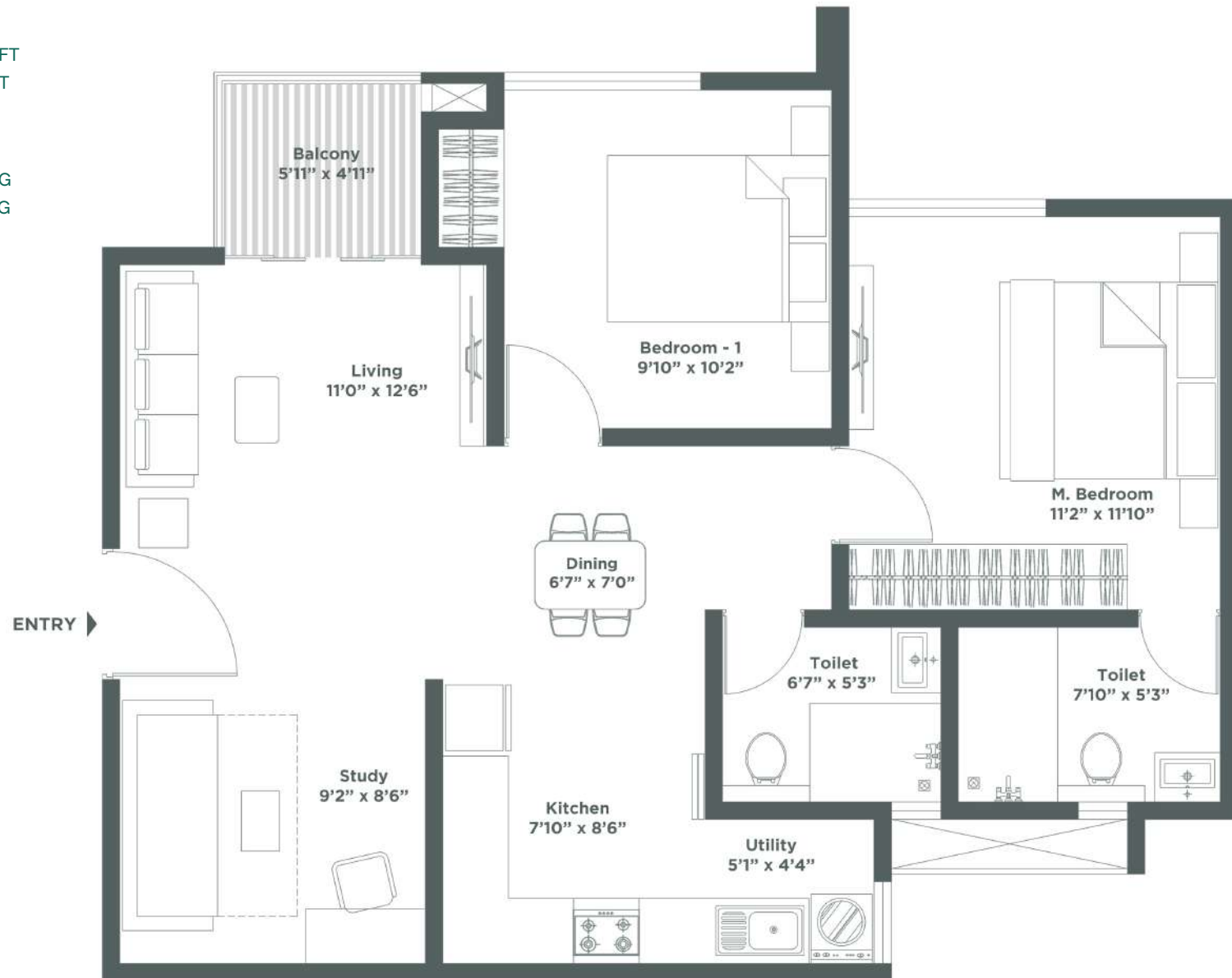
CARPET AREA - 751 SQ.FT

KALMIA - BLOCK A - WEST FACING

KALMIA - BLOCK B - WEST FACING

MARIGOLD - BLOCK A - WEST FACING

MARIGOLD - BLOCK B - WEST FACING



KEY PLAN

LAVENDER

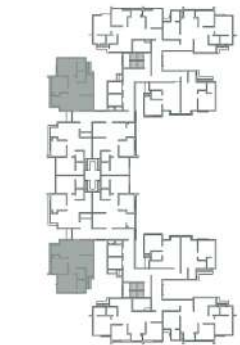
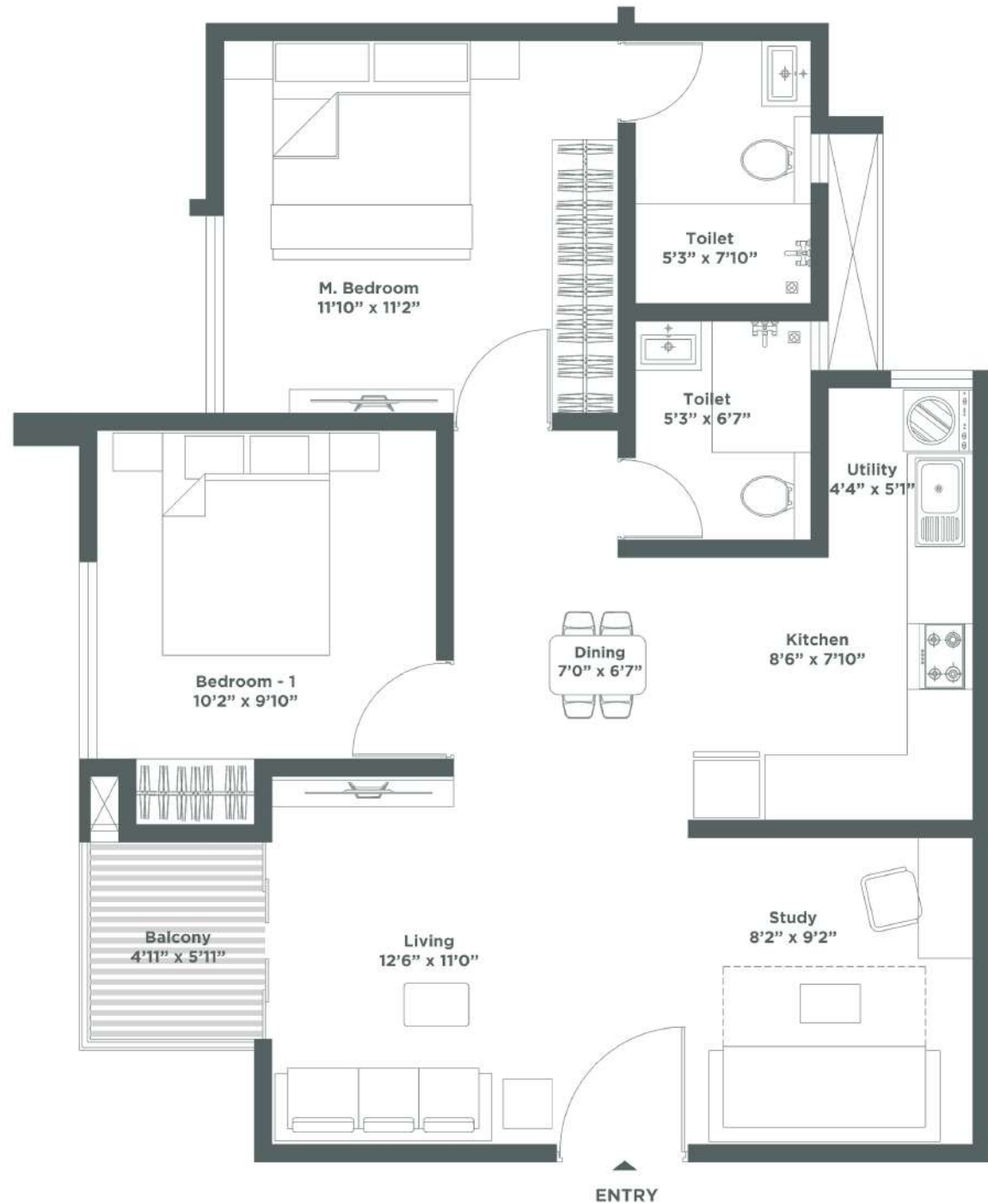
2.5 BEDROOM - 2T S

SUPER BUILT-UP AREA - 1090 SQ.FT

CARPET AREA - 752 SQ.FT

LAVENDER - BLOCK A - SOUTH FACING

LAVENDER - BLOCK B - NORTH FACING



KEY PLAN

MARIGOLD & KALMIA

2.5 BEDROOM - 2T S

SUPER BUILT-UP AREA - 1090 SQ.FT

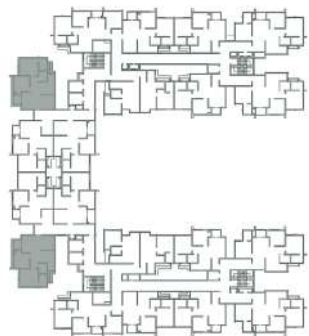
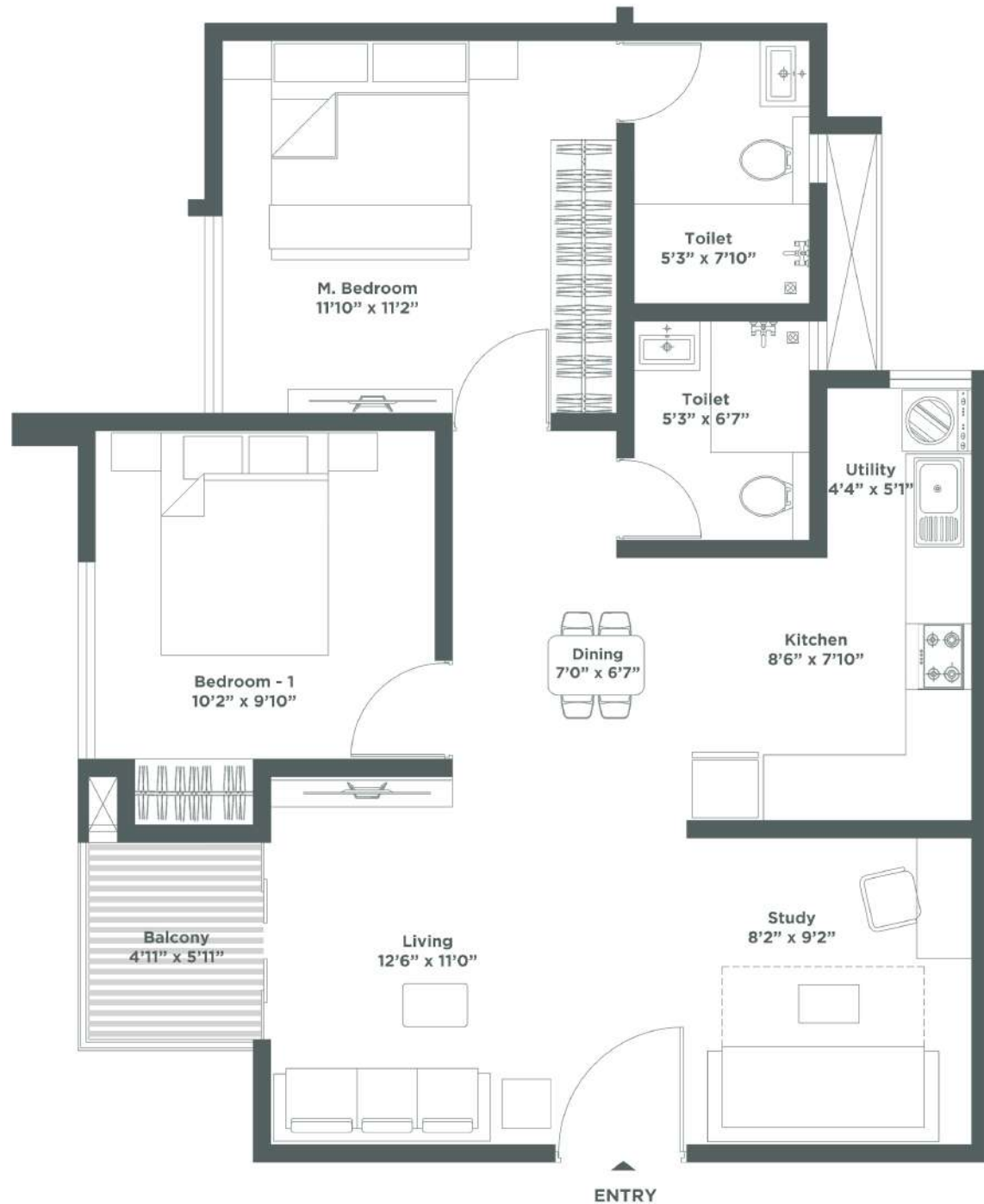
CARPET AREA - 774 SQ.FT

KALMIA - BLOCK A - SOUTH FACING

KALMIA - BLOCK B - NORTH FACING

MARIGOLD - BLOCK A - SOUTH FACING

MARIGOLD - BLOCK B - NORTH FACING



KEY PLAN

MARIGOLD & KALMIA

2.5 BEDROOM - 2T S

SUPER BUILT-UP AREA - 1110 SQ.FT

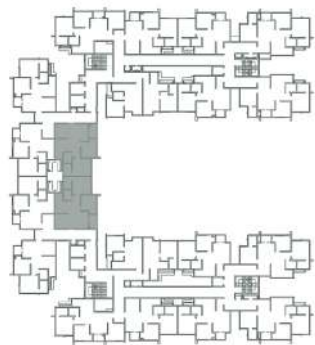
CARPET AREA - 774 SQ.FT

KALMIA - BLOCK A - NORTH FACING

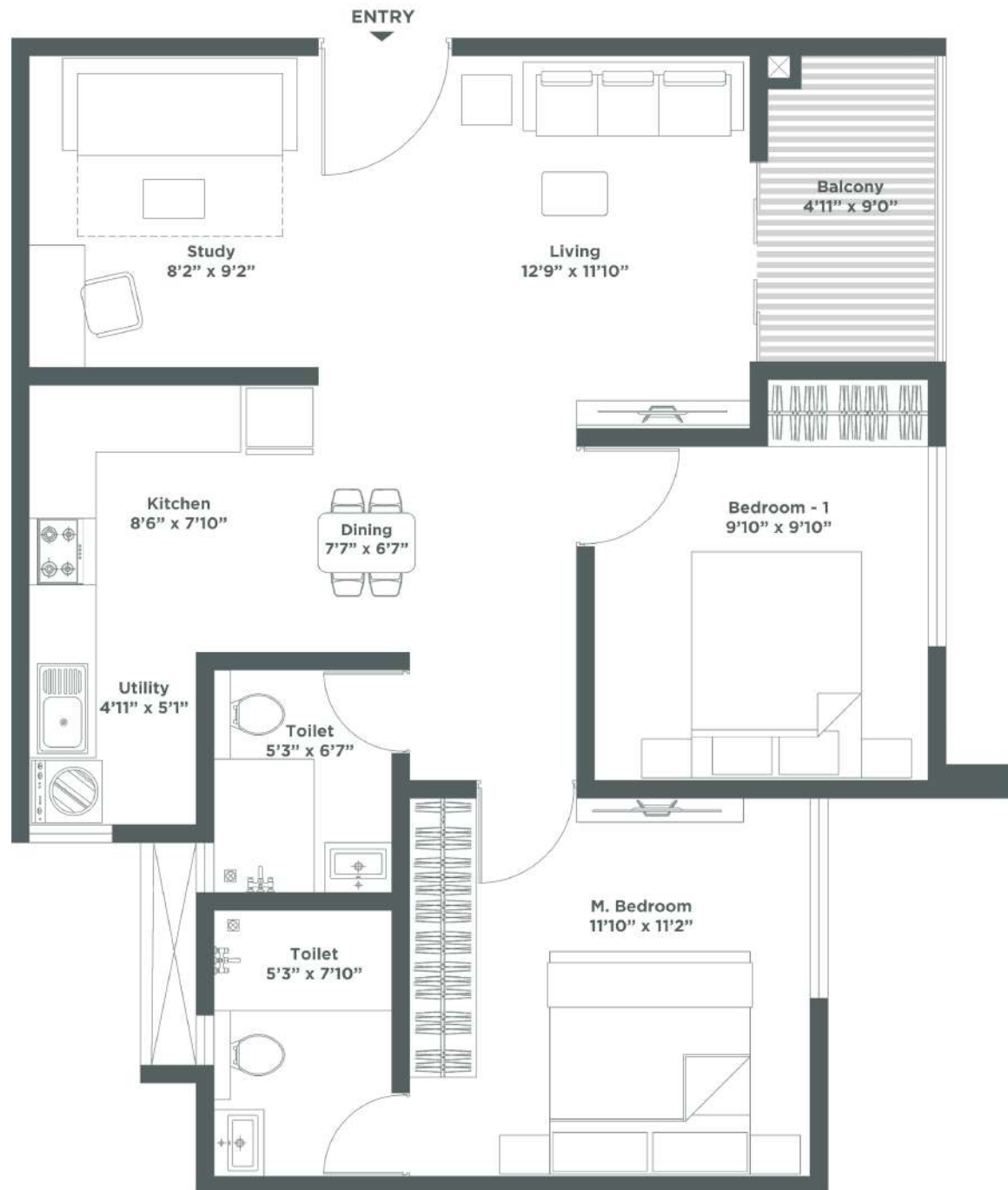
KALMIA - BLOCK B - SOUTH FACING

MARIGOLD - BLOCK A - NORTH FACING

MARIGOLD - BLOCK B - SOUTH FACING



KEY PLAN



LAVENDER

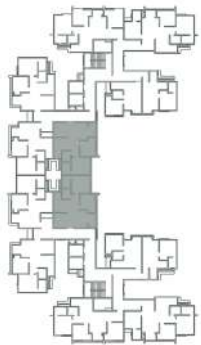
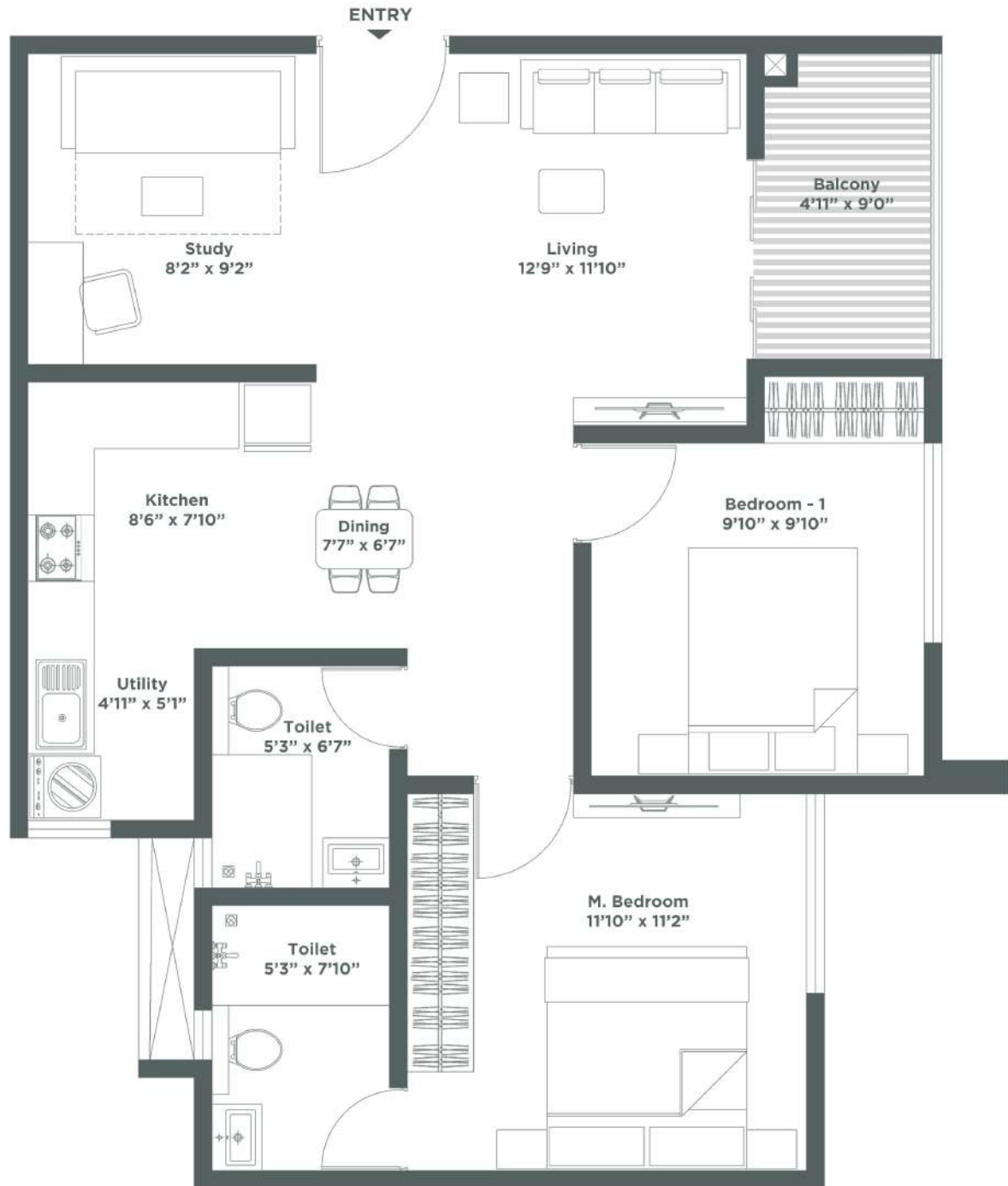
2.5 BEDROOM - 2T S

SUPER BUILT-UP AREA - 1110 SQ.FT

CARPET AREA - 774 SQ.FT

LAVENDER - BLOCK A - NORTH FACING

LAVENDER - BLOCK B - SOUTH FACING



KEY PLAN



Artistic impression of Embassy Verde

3BHK UNIT PLANS

MARIGOLD & KALMIA

3 BEDROOM - 2T

SUPER BUILT-UP AREA - 1228 SQ.FT

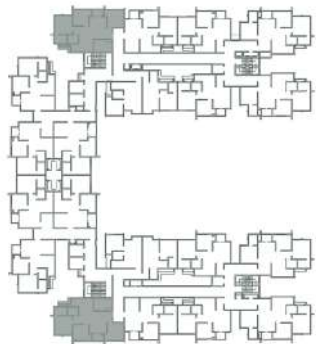
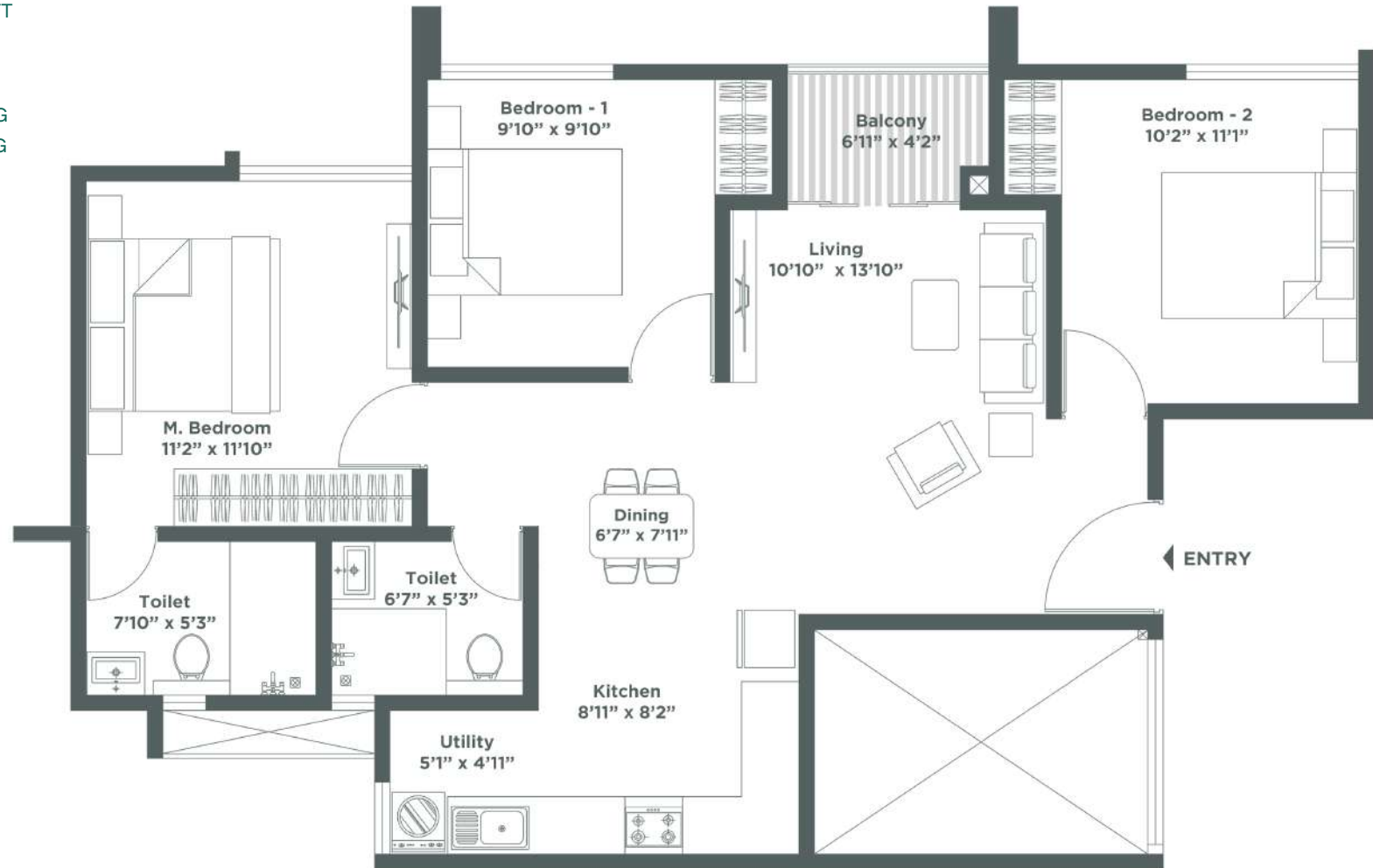
CARPET AREA - 843 SQ.FT

KALMIA - BLOCK A - EAST FACING

KALMIA - BLOCK B - EAST FACING

MARIGOLD - BLOCK A - EAST FACING

MARIGOLD - BLOCK B - EAST FACING



KEY PLAN

LAVENDER

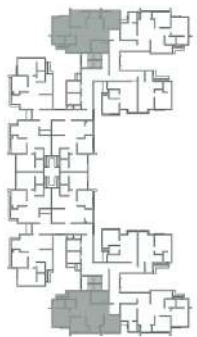
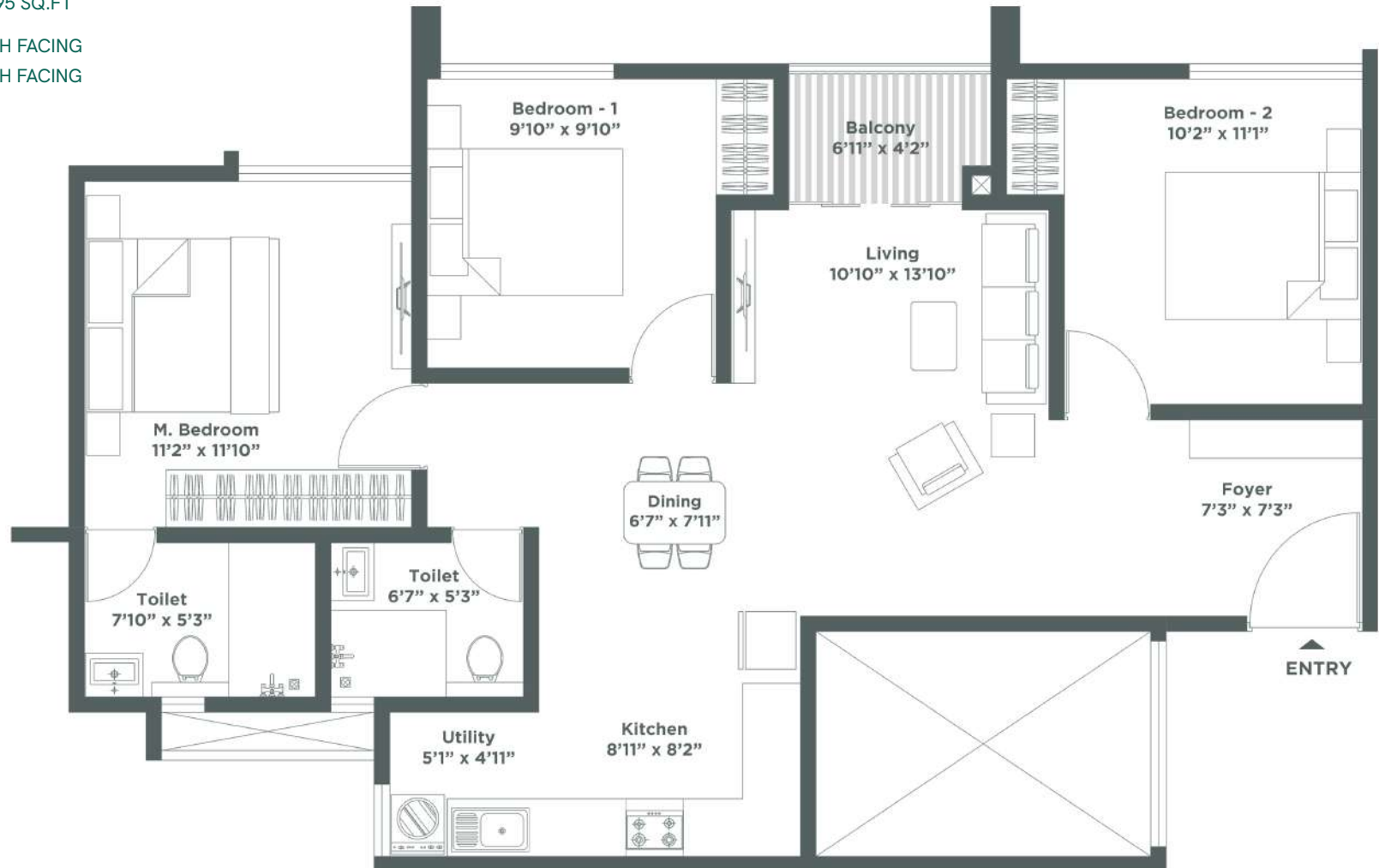
3 BEDROOM - 2T

SUPER BUILT-UP AREA - 1294 SQ.FT

CARPET AREA - 895 SQ.FT

LAVENDER - BLOCK A - SOUTH FACING

LAVENDER - BLOCK B - NORTH FACING



KEY PLAN

MARIGOLD & KALMIA

3 BEDROOM - 2T

SUPER BUILT-UP AREA - 1300 SQ.FT

CARPET AREA - 896 SQ.FT

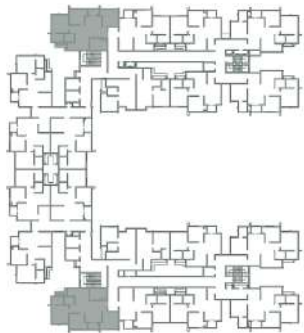
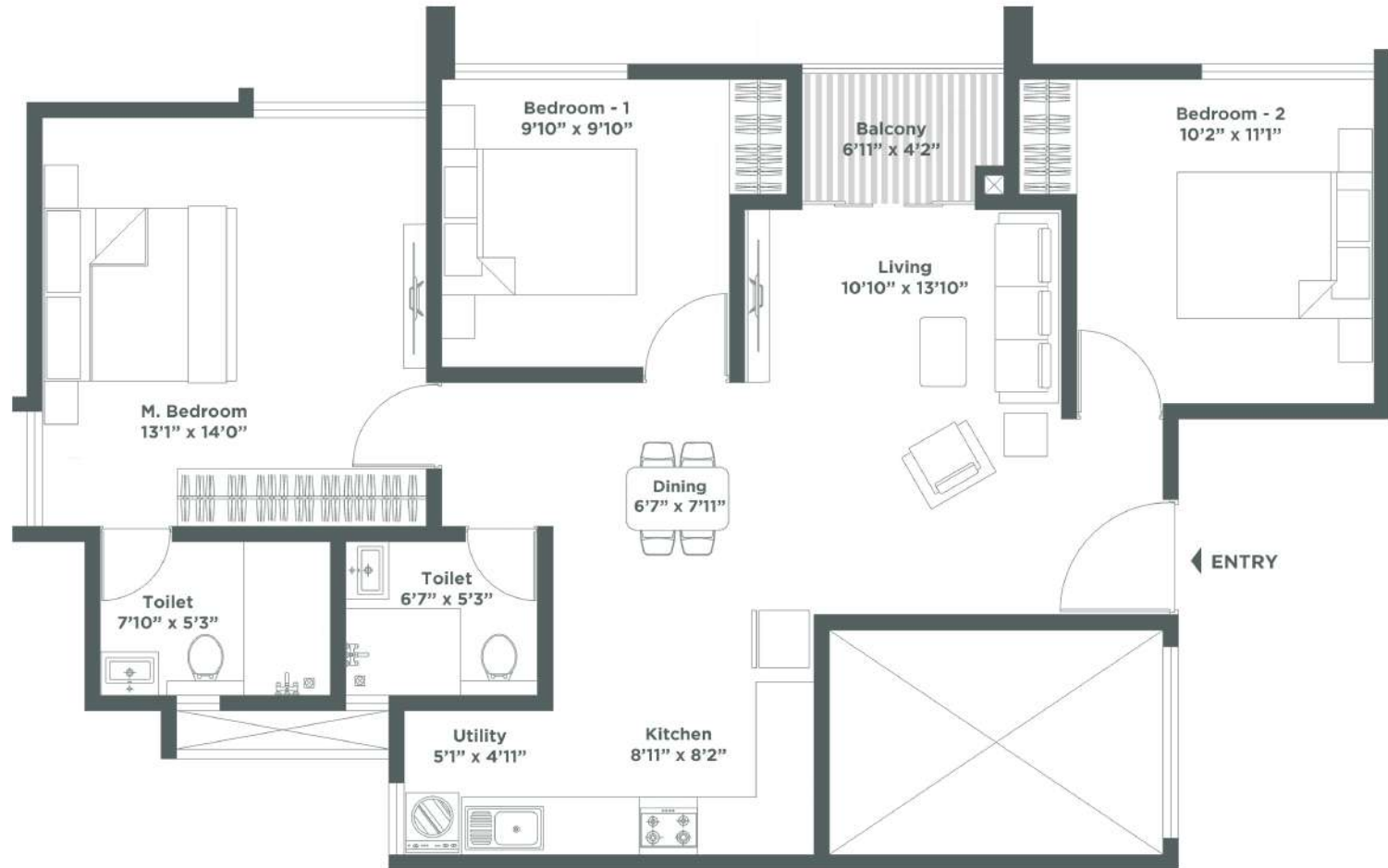
17TH AND 18TH FLOOR

KALMIA - BLOCK A - EAST FACING

KALMIA - BLOCK B - EAST FACING

MARIGOLD - BLOCK A - EAST FACING

MARIGOLD - BLOCK B - EAST FACING



KEY PLAN

LAVENDER

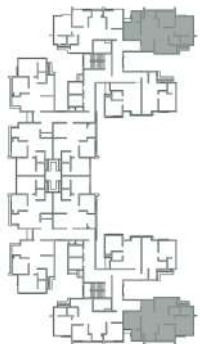
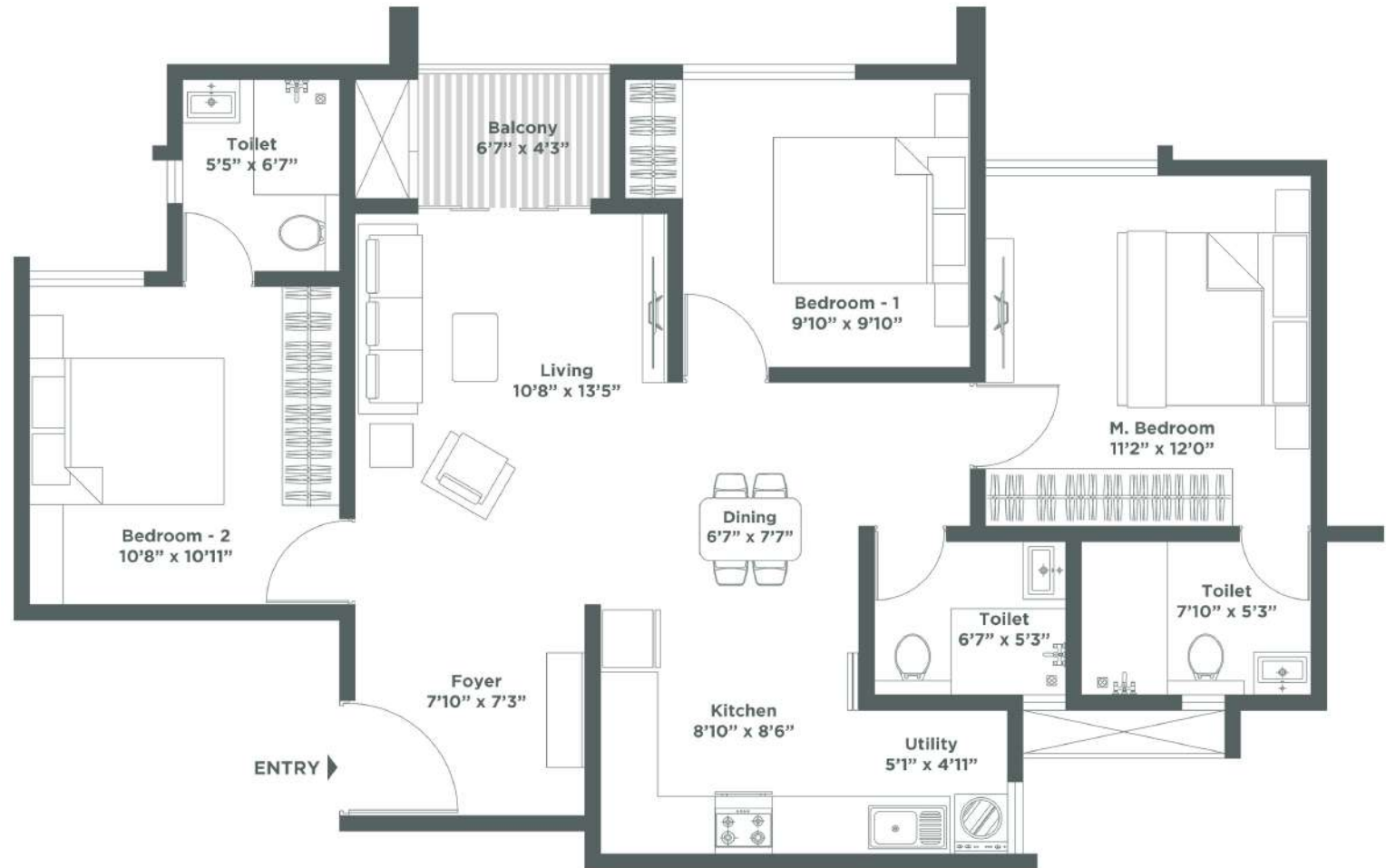
3 BEDROOM - 3T

SUPER BUILT-UP AREA - 1316 SQ.FT

CARPET AREA - 910 SQ.FT

LAVENDER - BLOCK A - WEST FACING

LAVENDER - BLOCK B - WEST FACING



KEY PLAN

MARIGOLD & KALMIA

3 BEDROOM - 3T

SUPER BUILT-UP AREA - 1320 SQ.FT

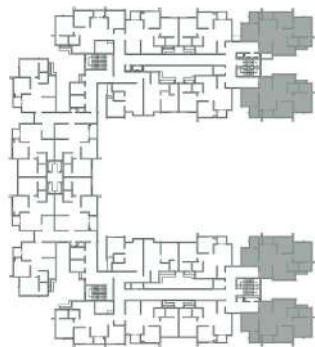
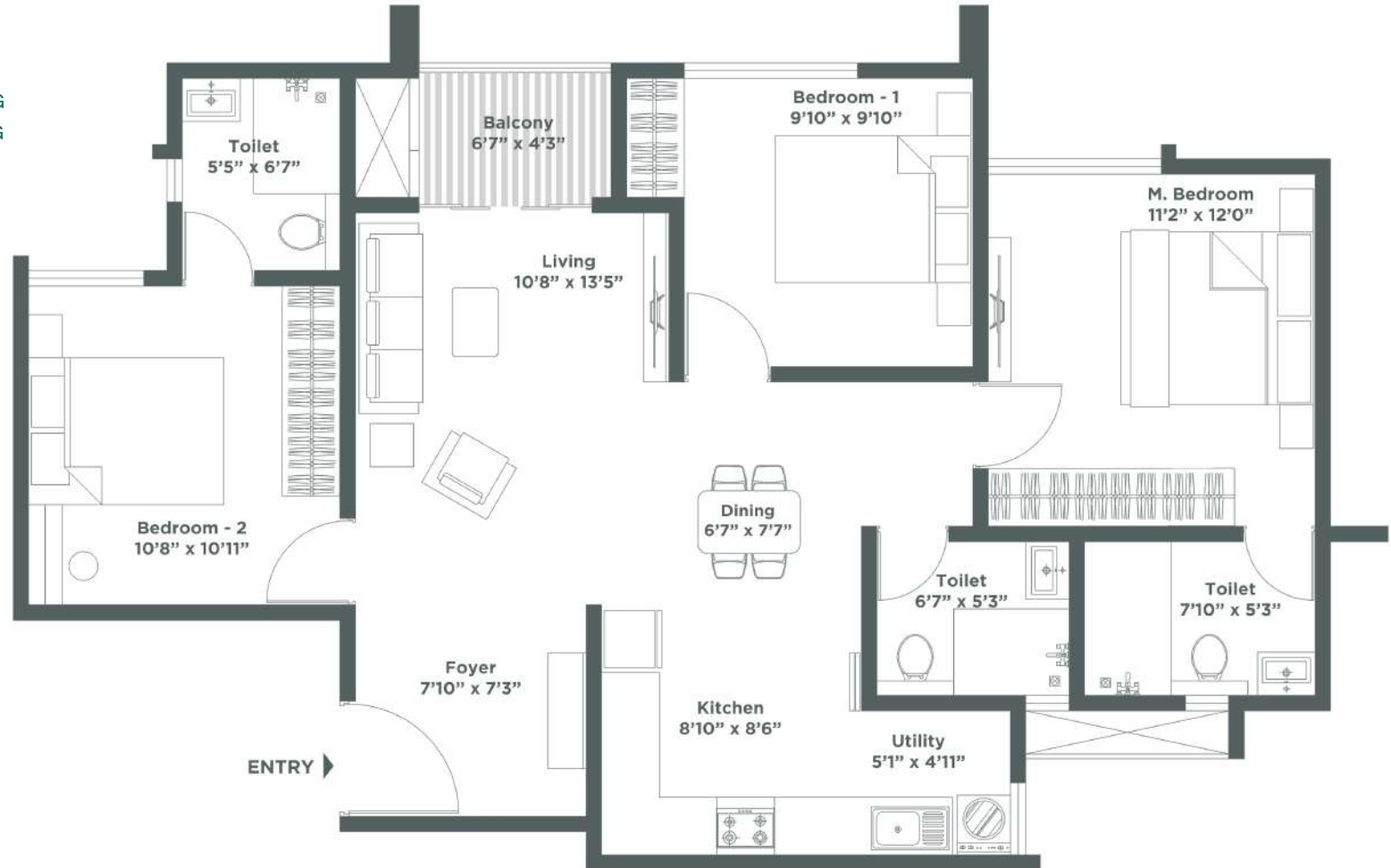
CARPET AREA - 910 SQ.FT

KALMIA - BLOCK A - WEST FACING

KALMIA - BLOCK B - WEST FACING

MARIGOLD - BLOCK A - WEST FACING

MARIGOLD - BLOCK B - WEST FACING



KEY PLAN

MARIGOLD & KALMIA

3 BEDROOM - 3T

SUPER BUILT-UP AREA - 1389 SQ.FT

CARPET AREA - 961 SQ.FT

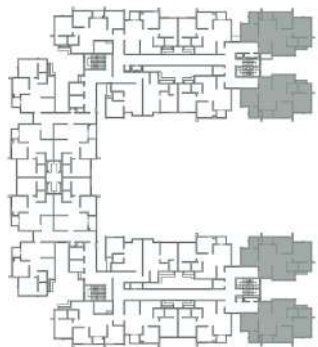
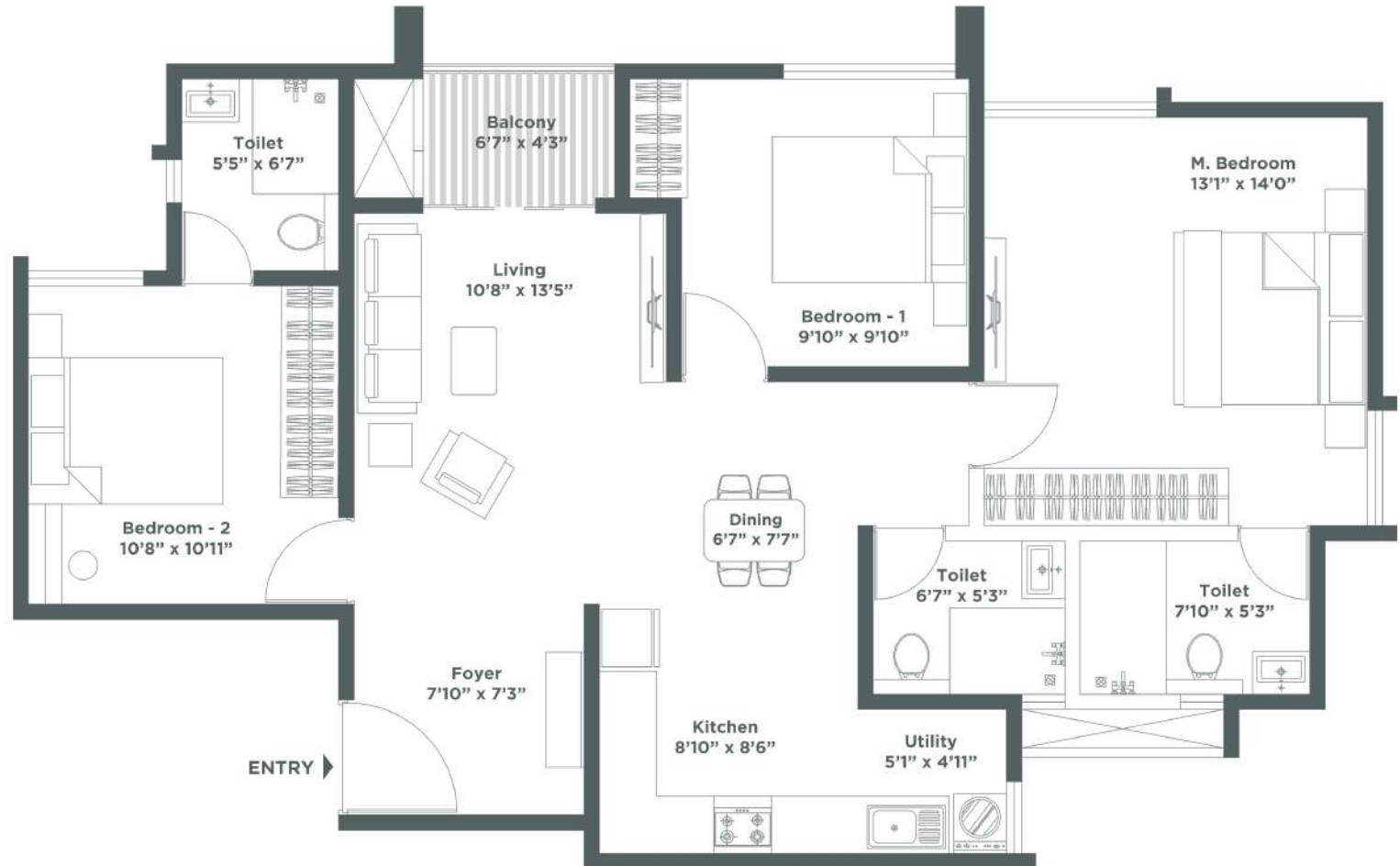
17TH AND 18TH FLOOR

KALMIA - BLOCK A- WEST FACING

KALMIA - BLOCK B - WEST FACING

MARIGOLD - BLOCK A - WEST FACING

MARIGOLD - BLOCK B - WEST FACING



KEY PLAN



Artistic impression of Embassy Verde



At Embassy Group, we believe the good life isn't a destination, it's a journey. This quest has led us through roads less travelled, uncharted mindscapes and places beyond the common to bring luxury lifestyles that transcend clichés. As part of our ongoing endeavour to create sustainable developments, our residential projects are designed in accordance with IGBC Green Homes Gold or Platinum ratings. The brand equity that we enjoy as pioneers of premium residences makes our ongoing and proposed residential projects the most sought-after addresses. Embassy Group is one of India's largest real estate conglomerates, spanning over three decades, with a broad portfolio of over 64 million Sq Ft of prime commercial, residential, retail, hospitality, services, and educational spaces across the Indian and international markets of Bangalore, Chennai, Pune, Coimbatore, Trivandrum, Serbia, and Malaysia. Across all asset classes, Embassy lays strong emphasis on high standards of quality, delivery, world-class services, environmental management, and safety. In the residential domain, Embassy Group has completed over 15 million Sq Ft and has over 28.85 million Sq Ft of ongoing and upcoming developments. Embassy Residential properties are future-ready, ahead of time. The design features considered essential today are already in place across Embassy properties and were conceived of years ago. This is made possible by our 'Future First' vision. A vision to see where the world is headed and to consistently have the agility to get there. Embassy's promise of the 'Good Life' derives from an immersive community perspective and reflects in the best of locations, uber-luxury lifestyles, fully-managed homes and international amenities.





✉ sales@embassyverde.com

📍 Nagamangala Village, Kundana Hobli,
Devanahalli Taluk, Bengaluru-562 110

A TOWNSHIP JUST 4 KMS
BEFORE AIRPORT TOLL PLAZA



RERA No.: PRM/KA/RERA/1250/303/PR/101224/007284
For further details, Visit www.rera.karnataka.gov.in