

Note:-

- BUILDING WILL BE DESIGNED (STRUCTURES) AS PER RELEVANT IS CODES FOR EARTH QUAKE RESISTANCE.
- BUILDING IS HAS AUTOMATIC SPRINKLER SYSTEM ON ALL FLOORS.

LEGEND:-

—

Project:

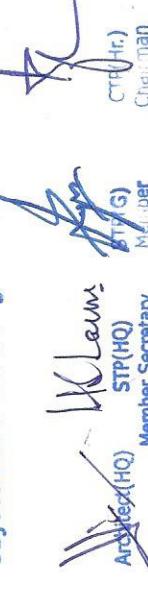
Revised building plan of group housing colony for an area measuring 34.0229 acres (License no.246 of 2007 dated 29.10.2007,License no.56 of 2011 dated 23.06.2011, License no. 37 of 2012 dated 22.04.2012,License no.66 of 2012 dated 21.06.2012,License no. 67 of 2012 dated 21.06.2012,License no. 43 of 2014 dated 16.06.2014 and License no.44 of 2014 dated 16.06.2014) Under TOD Policy dated 09.02.2016 in Sector-104,Gurgaon Monecar Urban Complex being developed by Juventus Estate Ltd. and Others.

Associate Architects



RSMS ARCHITECTS PVT. LTD.
69,Nara Niwas Bhawani Kunj
(Behind D2), Vasant Kunj,
New Delhi-110070.
Tel:- 011-26898616,26898617
www.rsmis-arch.com

This is a professional plan of the building and shall be used only for the purpose of filing objections from the general public.



OWNER'S SEAL & SIGNATURE



ARCHITECT'S SEAL & SIGNATURE



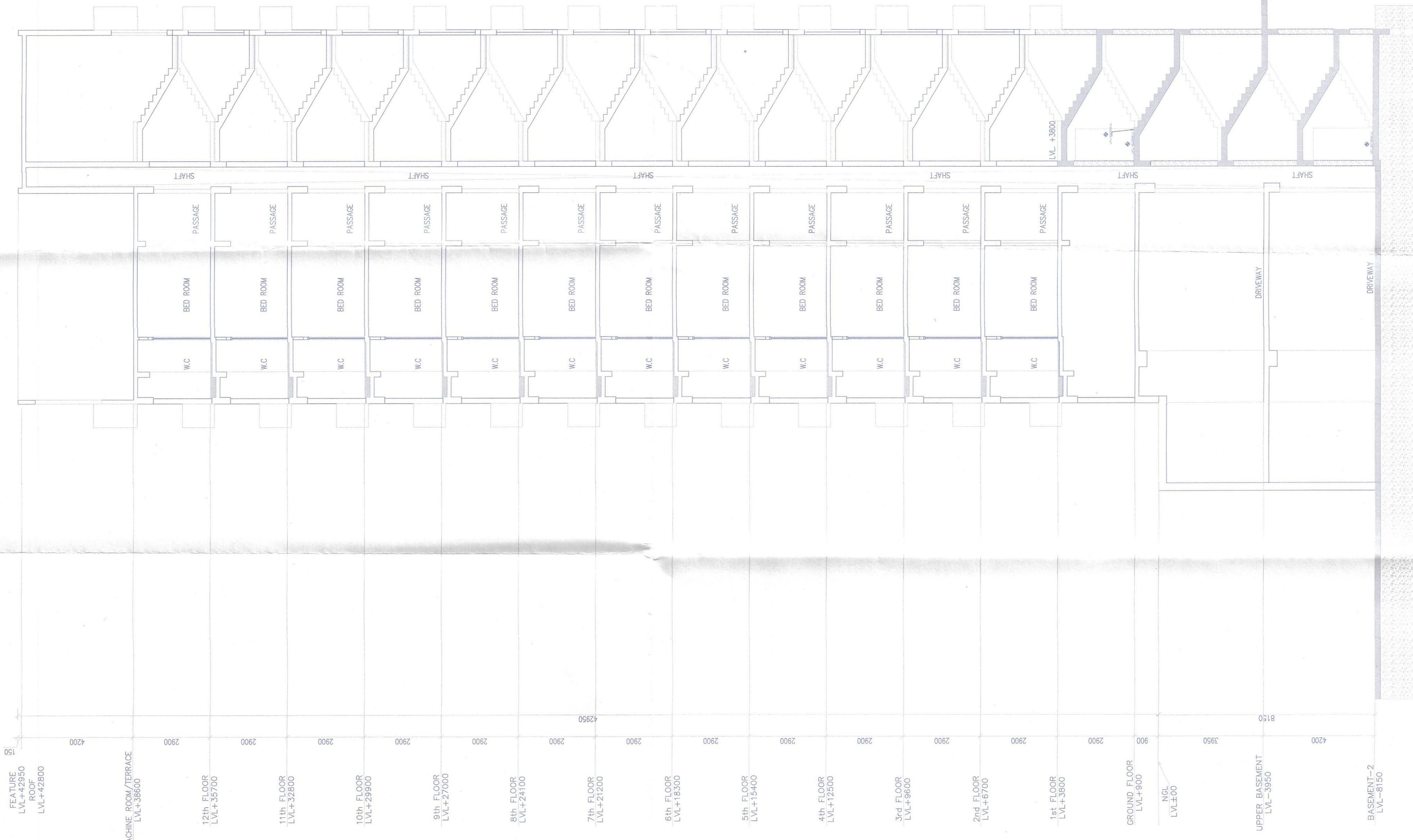
ONE SET SUBMITTED TO THE MUNICIPALITY



ONE SET SUBMITTED TO THE MUNICIPALITY



FEB-2020	Scale : 1:1000	Drawing No.:
Drawing Title:-		E-03
6TH TO 12TH FLOOR & SECTION-A-A (EWS)		
REVISED BUILDING PLAN OF GROUP HOUSING COLONY MEASURING 34.0229 ACRES IN SECTION-104, GURGAON MANECAR URBAN COMPLEX DEVELOPED BY JUVENTUS ESTATE LTD. AND OTHERS.		
B. RES.		SEC-104



SECTION Y-Y

FAR AREA OF TYPICAL UNIT TO OTHER UNITS			
REDUCTION			
GROSS-A	X	1.750	= 3.150 SQM
B	X	0.800	= 0.800 SQM
C	X	0.750	= 0.750 SQM
D	X	0.500	= 0.500 SQM
E	X	0.500	= 0.500 SQM
F	X	2.000	= 2.000 SQM
G	X	1.500	= 1.500 SQM
H	X	2.000	= 2.000 SQM
I	X	0.500	= 0.500 SQM
J	X	0.500	= 0.500 SQM
K	X	0.500	= 0.500 SQM
L	X	0.500	= 0.500 SQM
M	X	0.500	= 0.500 SQM
N	X	0.500	= 0.500 SQM
O	X	0.500	= 0.500 SQM
P	X	0.500	= 0.500 SQM
Q	X	0.500	= 0.500 SQM
R	X	0.500	= 0.500 SQM
S	X	0.500	= 0.500 SQM
T	X	0.500	= 0.500 SQM
U	X	0.500	= 0.500 SQM
V	X	0.500	= 0.500 SQM
W	X	0.500	= 0.500 SQM
X	X	0.500	= 0.500 SQM
Y	X	0.500	= 0.500 SQM
Z	X	0.500	= 0.500 SQM
TOTAL			= 62.741 SQM

FAR AREA OF TYPICAL UNIT TO OTHER UNITS			
REDUCTION			
GROSS-A	X	1.750	= 3.150 SQM
B	X	0.800	= 0.800 SQM
C	X	0.750	= 0.750 SQM
D	X	0.500	= 0.500 SQM
E	X	0.500	= 0.500 SQM
F	X	2.000	= 2.000 SQM
G	X	1.500	= 1.500 SQM
H	X	2.000	= 2.000 SQM
I	X	0.500	= 0.500 SQM
J	X	0.500	= 0.500 SQM
K	X	0.500	= 0.500 SQM
L	X	0.500	= 0.500 SQM
M	X	0.500	= 0.500 SQM
N	X	0.500	= 0.500 SQM
O	X	0.500	= 0.500 SQM
P	X	0.500	= 0.500 SQM
Q	X	0.500	= 0.500 SQM
R	X	0.500	= 0.500 SQM
S	X	0.500	= 0.500 SQM
T	X	0.500	= 0.500 SQM
U	X	0.500	= 0.500 SQM
V	X	0.500	= 0.500 SQM
W	X	0.500	= 0.500 SQM
X	X	0.500	= 0.500 SQM
Y	X	0.500	= 0.500 SQM
Z	X	0.500	= 0.500 SQM
TOTAL			= 62.741 SQM

NET AREA OF TYPICAL UNIT TO OTHER UNITS			
REDUCTION			
GROSS-A	X	1.750	= 3.150 SQM
B	X	0.800	= 0.800 SQM
C	X	0.750	= 0.750 SQM
D	X	0.500	= 0.500 SQM
E	X	0.500	= 0.500 SQM
F	X	2.000	= 2.000 SQM
G	X	1.500	= 1.500 SQM
H	X	2.000	= 2.000 SQM
I	X	0.500	= 0.500 SQM
J	X	0.500	= 0.500 SQM
K	X	0.500	= 0.500 SQM
L	X	0.500	= 0.500 SQM
M	X	0.500	= 0.500 SQM
N	X	0.500	= 0.500 SQM
O	X	0.500	= 0.500 SQM
P	X	0.500	= 0.500 SQM
Q	X	0.500	= 0.500 SQM
R	X	0.500	= 0.500 SQM
S	X	0.500	= 0.500 SQM
T	X	0.500	= 0.500 SQM
U	X	0.500	= 0.500 SQM
V	X	0.500	= 0.500 SQM
W	X	0.500	= 0.500 SQM
X	X	0.500	= 0.500 SQM
Y	X	0.500	= 0.500 SQM
Z	X	0.500	= 0.500 SQM
TOTAL			= 62.741 SQM

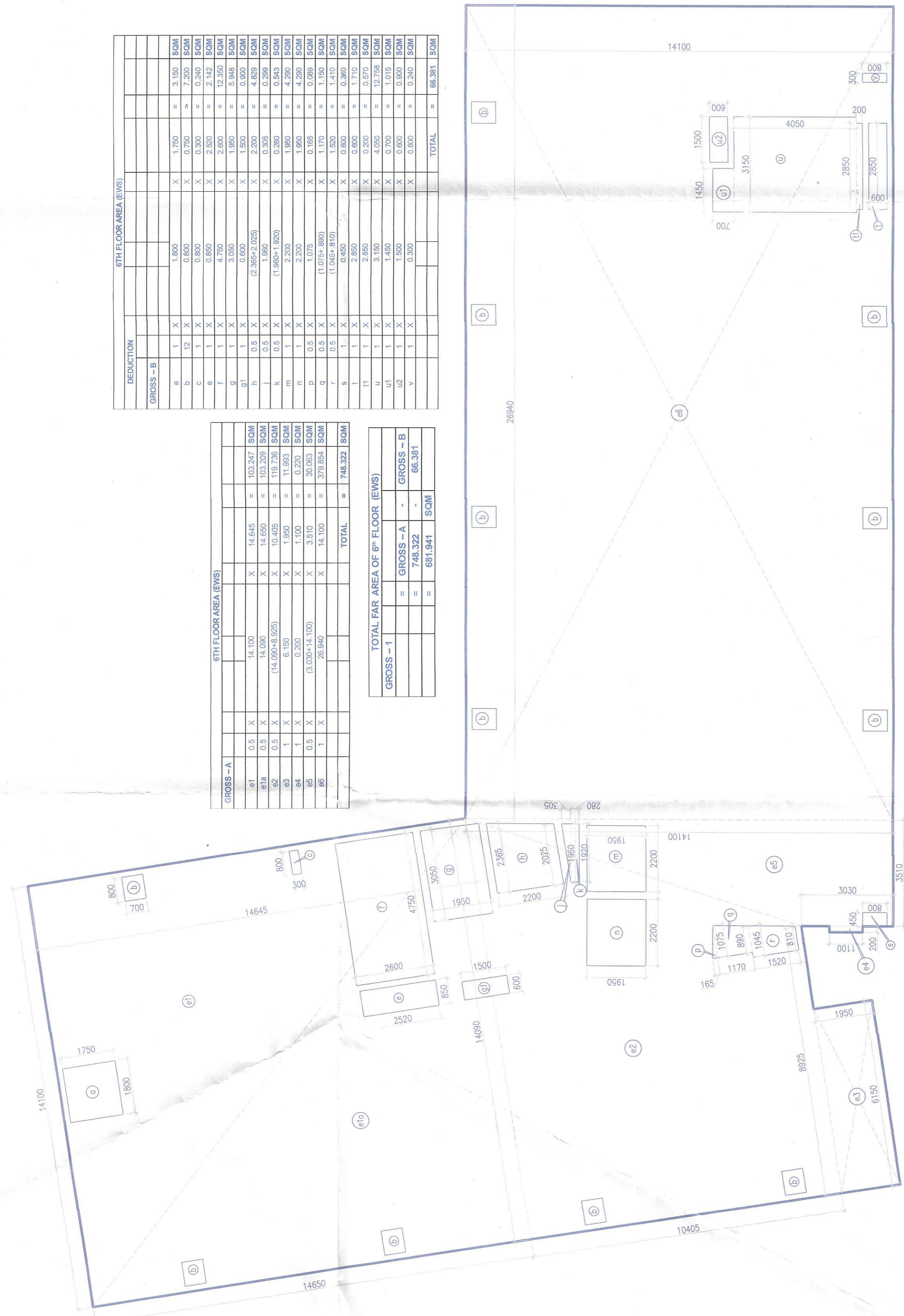
7TH TO 12 TH FLOOR FAR AREA



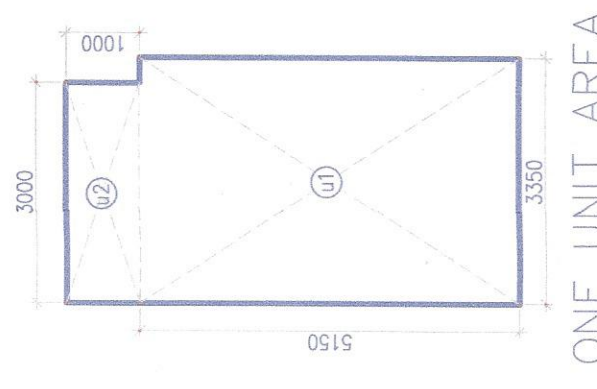
8TH FLOOR AREA PLAN			
REDUCTION			
GROSS-A	X	1.750	= 3.150 SQM
B	X	0.800	= 0.800 SQM
C	X	0.750	= 0.750 SQM
D	X	0.500	= 0.500 SQM
E	X	0.500	= 0.500 SQM
F	X	2.000	= 2.000 SQM
G	X	1.500	= 1.500 SQM
H	X	2.000	= 2.000 SQM
I	X	0.500	= 0.500 SQM
J	X	0.500	= 0.500 SQM
K	X	0.500	= 0.500 SQM
L	X	0.500	= 0.500 SQM
M	X	0.500	= 0.500 SQM
N	X	0.500	= 0.500 SQM
O	X	0.500	= 0.500 SQM
P	X	0.500	= 0.500 SQM
Q	X	0.500	= 0.500 SQM
R	X	0.500	= 0.500 SQM
S	X	0.500	= 0.500 SQM
T	X	0.500	= 0.500 SQM
U	X	0.500	= 0.500 SQM
V	X	0.500	= 0.500 SQM
W	X	0.500	= 0.500 SQM
X	X	0.500	= 0.500 SQM
Y	X	0.500	= 0.500 SQM
Z	X	0.500	= 0.500 SQM
TOTAL			= 62.741 SQM

TOTAL FAR AREA OF 8TH FLOOR EWS			
REDUCTION			
GROSS-A	X	1.750	= 3.150 SQM
B	X	0.800	= 0.800 SQM
C	X	0.750	= 0.750 SQM
D	X	0.500	= 0.500 SQM
E	X	0.500	= 0.500 SQM
F	X	2.000	= 2.000 SQM
G	X	1.500	= 1.500 SQM
H	X	2.000	= 2.000 SQM
I	X	0.500	= 0.500 SQM
J	X	0.500	= 0.500 SQM
K	X	0.500	= 0.500 SQM
L	X	0.500	= 0.500 SQM
M	X	0.500	= 0.500 SQM
N	X	0.500	= 0.500 SQM
O	X	0.500	= 0.500 SQM
P	X	0.500	= 0.500 SQM
Q	X	0.500	= 0.500 SQM
R	X	0.500	= 0.500 SQM
S	X	0.500	= 0.500 SQM
T	X	0.500	= 0.500 SQM
U	X	0.500	= 0.500 SQM
V	X	0.500	= 0.500 SQM
W	X	0.500	= 0.500 SQM
X	X	0.500	= 0.500 SQM
Y	X	0.500	= 0.500 SQM
Z	X	0.500	= 0.500 SQM
TOTAL			= 62.741 SQM

6TH FLOOR FAR AREA



ADDITION ONE UNIT AREA (EWS)			
GROSS-A	X	3.300	= 17.253 SQM
U1	X	1.000	= 3.000 SQM
U2	X	1.000	= 3.000 SQM
TOTAL			= 20.253 SQM



ONE UNIT AREA